



Kingsmead Avenue, TW16

£750,000

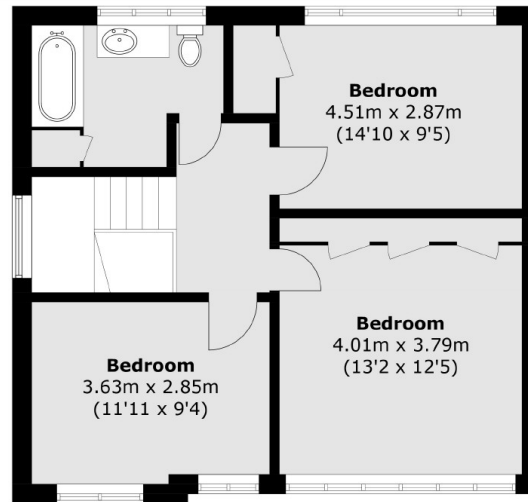
A spacious three bedroom detached house with off street parking and a garage. This charming family home has a light and spacious feel and is being sold with the added benefit of no forward chain.

Kingsmead Avenue is the perfect location, this quiet residential road is in the heart of Sunbury Village, everything Lower Sunbury has to offer is close by including the local shops, the River Thames, riverside pubs and Sunbury Park.

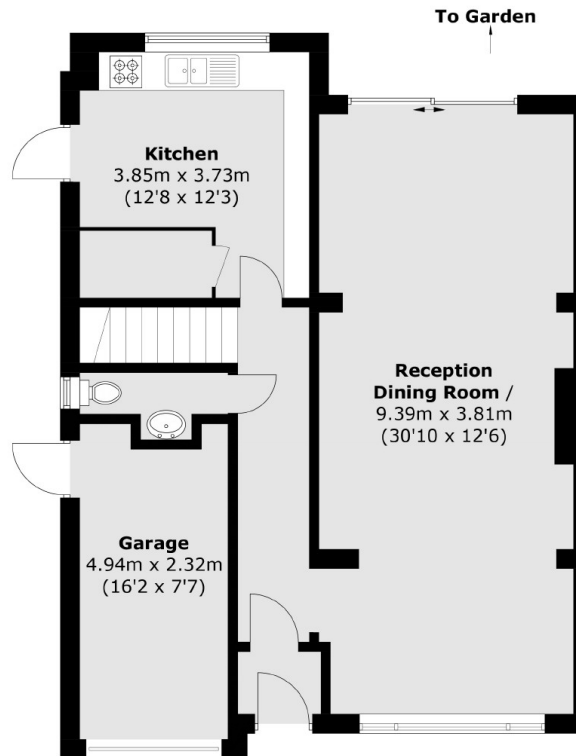
Features

- Detached
- Three Bedrooms
- Private Rear Garden
- Garage
- Off Street Parking
- No Forward Chain

Kingsmead Avenue, Sunbury-On-Thames, TW16



First Floor



Ground Floor

Total area (approx.): 119.5 sq. m (1286.3 sq. ft)
Garage: 11.1 sq. m (119.5 sq. ft)