



## Oak Grove, TW16

£345,000

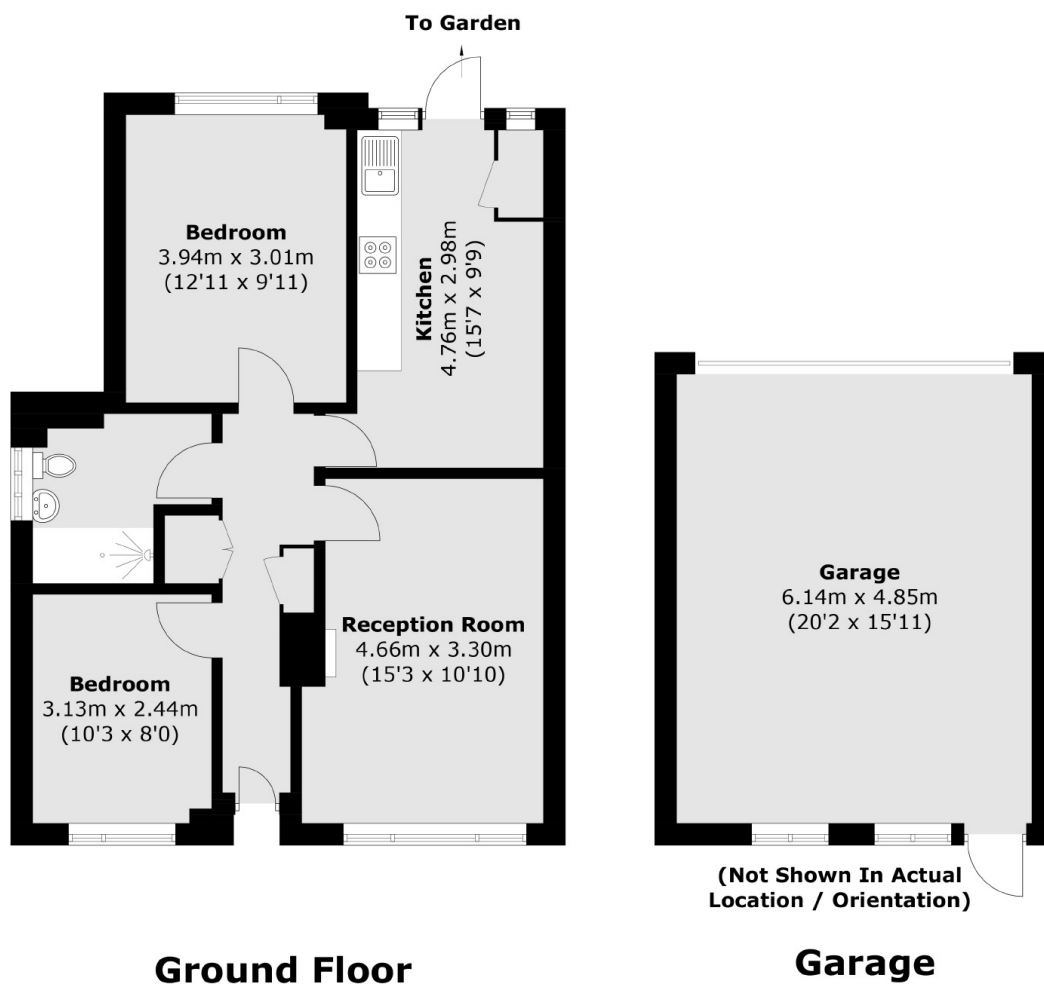
A two bedroom ground floor maisonette with a landscaped rear garden and a large garage. The property would be ideal for a first time buyer or someone looking to downsize and is being sold with the added bonus of no forward chain.

Located on Oak Grove, the property provides easy access to both Sunbury and Hampton. The local shops, Kempton Park Station, good schools and the River Thames are all close by.

### Features

- No Forward Chain
- Maisonette
- Ground Floor
- Two Bedrooms
- Landscaped Rear Garden
- Garage

# Oak Grove, Sunbury-On-Thames, TW16



Total area (approx.): 61.5 sq. m (662.0 sq. ft)  
Garage (approx.): 29.9 sq. m (321.8 sq. ft)