



Highfield Road, TW16

£1,500,000

Dexters

Highfield Road, TW16

A unique five bedroom, three bathroom detached family home offering over 2600 sq ft of flexible accommodation within a countryside setting with a wraparound garden and the added bonus of an adjoining horse paddock.

The property has been extended and fully refurbished to create a beautiful family home. There is a stunning bespoke kitchen with a movable central island with breakfast bar, bi-fold doors opening out on to the rear garden and a utility room. A dual aspect reception room with a cast iron wood burner and three sets of bi fold doors opening on to the garden.

There is a spacious main bedroom with an en suite shower room and bi fold doors opening on to a terrace. Second double bedroom suite with bedroom area, additional living / dressing area and an en suite shower room. There are two additional double bedrooms, a study/ fifth bedroom and a luxury family bathroom. All four bedrooms have bi fold doors opening out on to terraces. The rear garden has an outside kitchen with a pizza oven, a large paved patio area and an expansive lawn. The large frontage provides an in and out driveway with off street parking for several cars.

Highfield Road is a quiet private road located off Halliford Road. The location provides easy access to both Lower Sunbury and Shepperton with the River Thames, local parks and road links including M3, A316 and M25 all close by.

Features

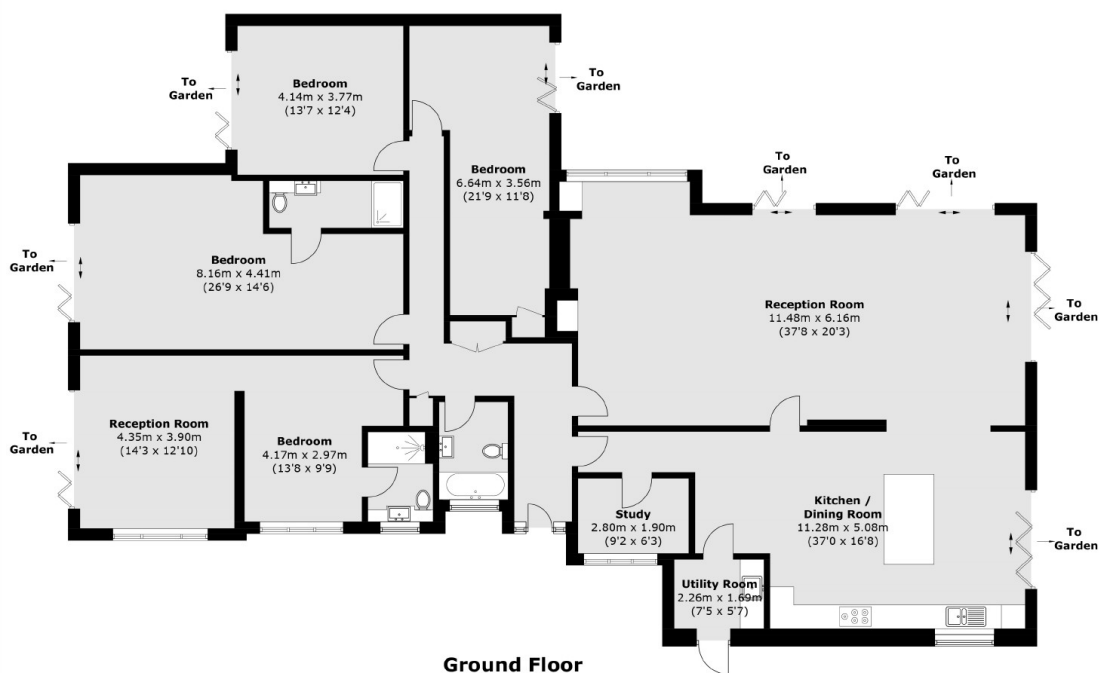
- Detached House
- Four Double Bedrooms
- Three Bathrooms
- Study/Fifth Bedroom
- Horse Paddock
- Countryside Setting







Highfield Road, Sunbury-On-Thames, TW16



Total area (approx.): 258.0 sq. m (2777.1 sq. ft)