



## Wood Road, TW17

### £450,000

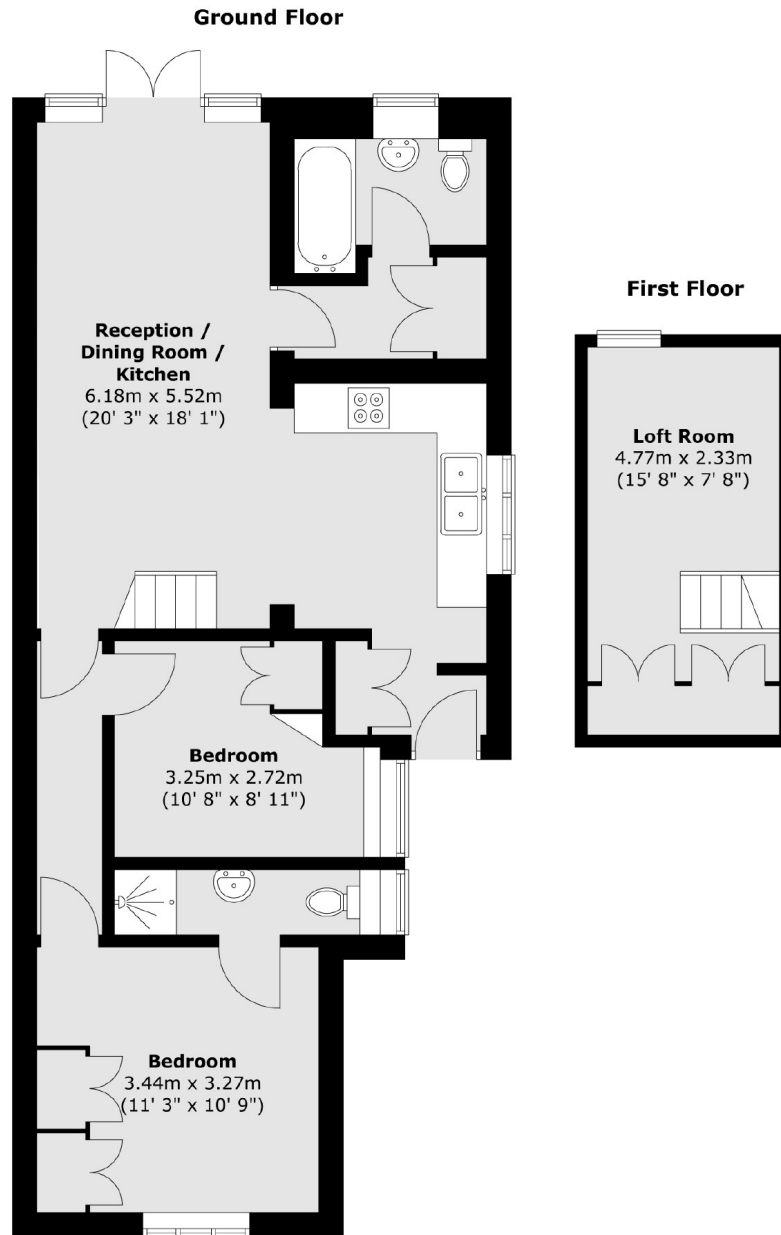
A two bedroom, two bathroom semi detached bungalow with off street parking and an amazing large rear garden. The property is filled with potential and scope to extend STPP and is being sold with the added bonus of no forward chain.

Wood Road is a great location, this popular residential is road located off Laleham Road, Shepperton Station which provides a direct service into London Waterloo and the High Street are just over half a mile away.

### Features

- Bungalow
- Semi Detached
- Two Bedrooms
- Two Bathrooms
- Large Rear Garden
- No Forward Chain

# Wood Road, Shepperton, TW17



Total area (approx.) : 74.3 sq. m (800 sq. ft)