



## Rooksmead Road, TW16

£1,150,000

A extended and spacious five bedroom detached house with off street and a large South facing rear garden. The property offers over 2300 sq ft of flexible accommodation and would be ideal for an up-sizing family looking for their forever home.

Rooksmead Road is a wonderful location off Green Street, the River Thames, Cedars Recreation Ground, Sunbury Park, the 'Walled Garden' and Sunbury station which provides a direct service into Waterloo are all easily accessible.

### Features

- Detached
- Five Bedrooms
- Four reception Room
- Two Bathrooms
- Over 2300 Sq Ft
- Off Street parking



## Rooksmead Road, TW16

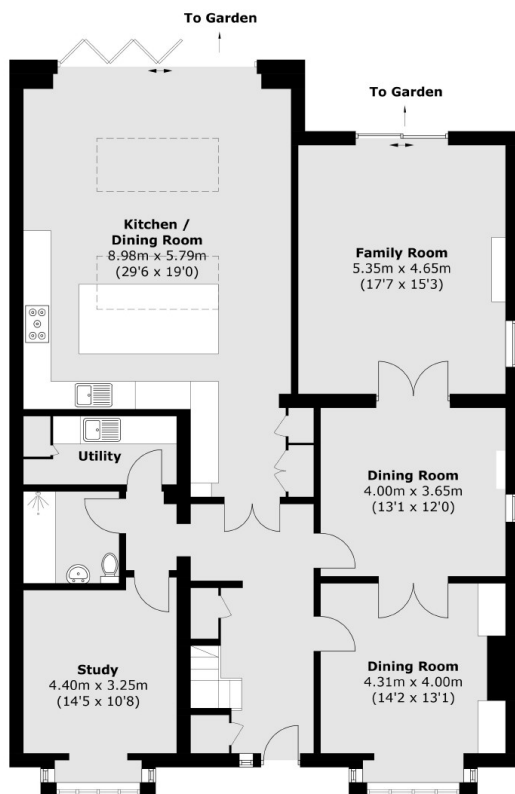
On the ground floor there is a welcoming entrance hallway, front reception room, dining room, family room opening out on to the garden, a fourth reception room currently used as a home office and a shower room. There is also the added bonus of an stunning extended modern kitchen with a separate utility room.

On the first floor there are five bedrooms and a family bathroom with bath and walk in shower. To the front of the property there is off street parking for approximately three cars. To the rear there is a generous garden with a patio area which is perfect for entertaining, an expansive lawn and mature borders.

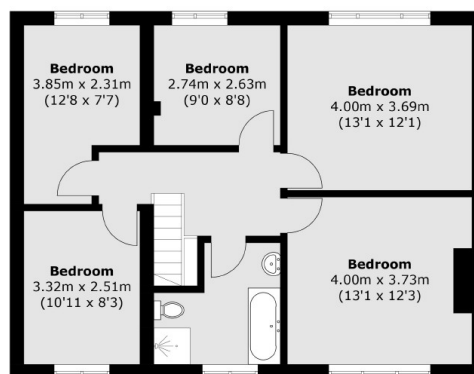
Great family home like this do not come on to the market often. Give us a call straight away to arrange a viewing to avoid missing out.



# Rooksmead Road, Sunbury-On-Thames, TW16



**Ground Floor**



**First Floor**

Total area (approx.): 220.5 sq. m (2,373.4 sq. ft)