



## Beverley Road, TW16

£650,000

An extended four bedroom semi-detached house, with off-street parking and a large garden. The property is smartly presented throughout with accommodation spread over three floors offering a light and spacious feel.

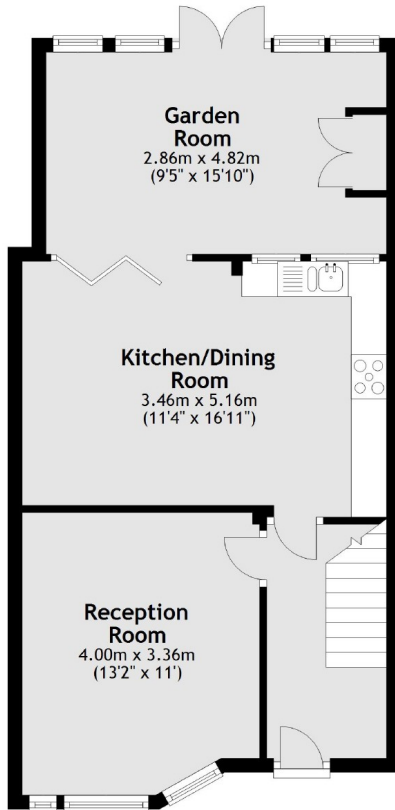
Beverley Road is a popular residential road located off Nursery Road. Both Upper Halliford and Sunbury stations are close by and provide a direct service into Waterloo.

### Features

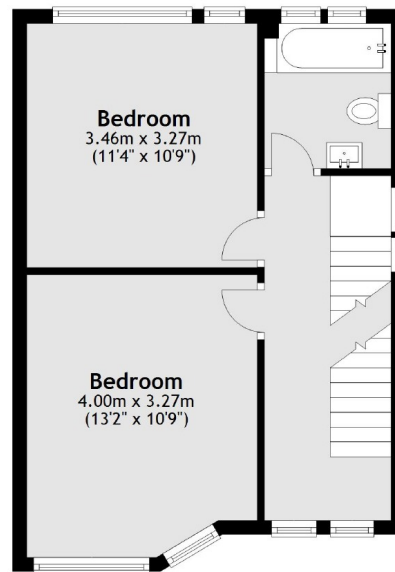
- Semi-Detached House
- Four Bedrooms
- Two Bathrooms
- Eat-In Kitchen
- Conservatory
- Off-Street Parking

# Beverley Road, Sunbury-On-Thames, TW16

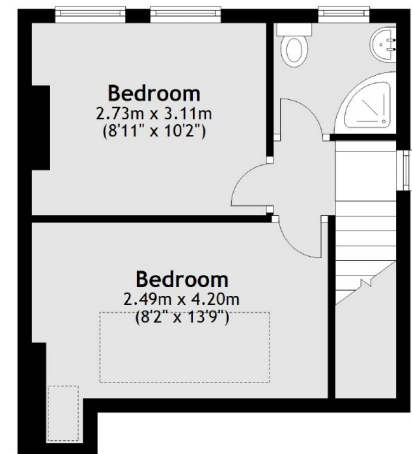
## Ground Floor



## First Floor



## Second Floor



Total area: approx. 117.3 sq. metres (1262.2 sq. feet)