



Evelyn Crescent, TW16

£599,950

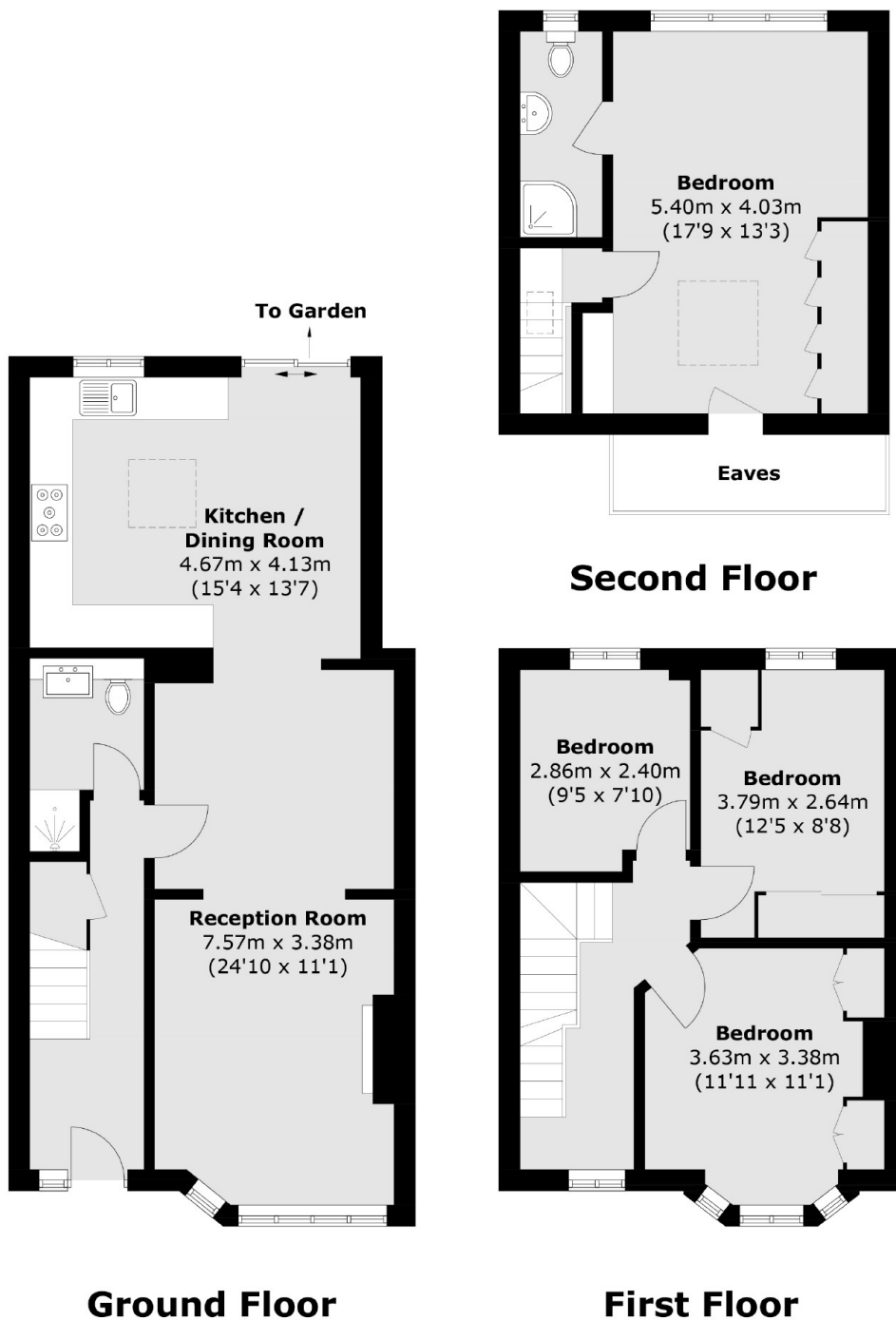
A four-bedroom 1930's house set over three floors; this stunning property has been extended by the current owners to create the perfect family home boasting a brand-new kitchen perfect for hosting entertaining.

Evelyn Crescent is close to local schools and moments from Upper Halliford Train Station with links to London Waterloo.

Features

- Four Bedrooms
- Loft Conversion
- Rear Extension
- Modern kitchen
- Two Bathrooms
- Large Driveway

Evelyn Crescent, Sunbury-On-Thames, TW16



Total area (approx.): 121.0 sq. m (1302.4 sq. ft)
(Excluding Eaves)