



Kings Avenue, TW16

£650,000

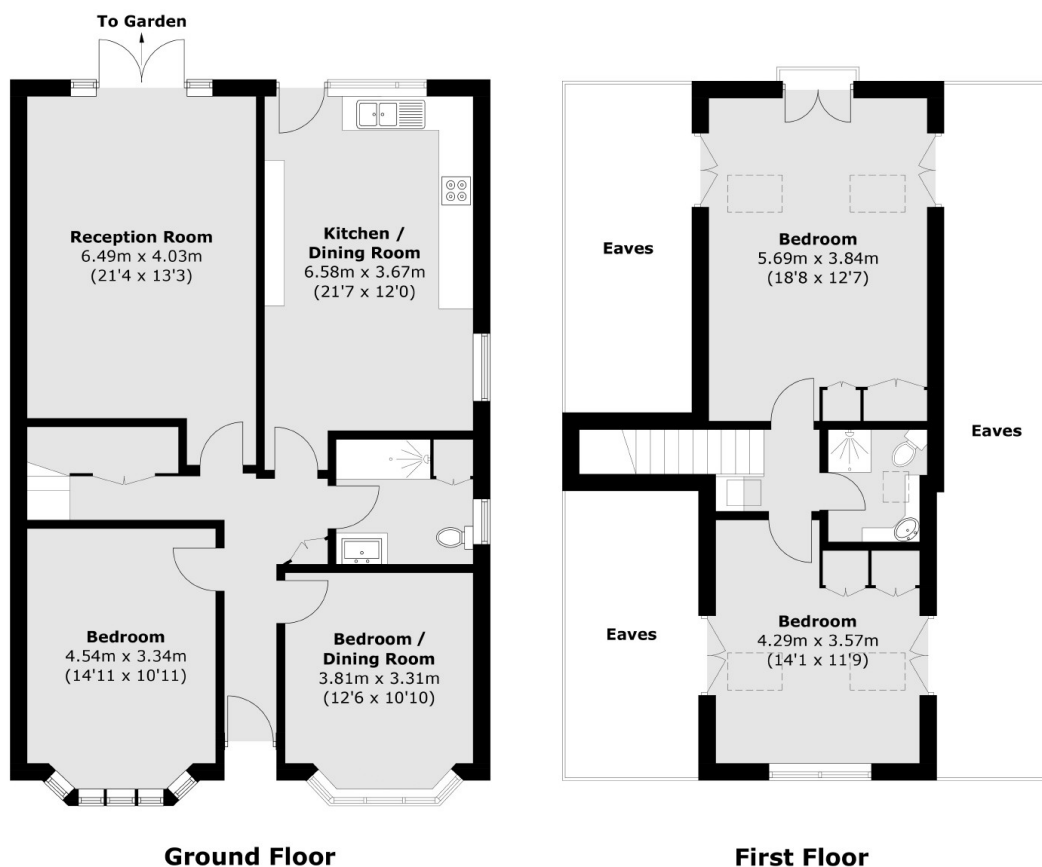
A three/four bedroom detached chalet bungalow with off street parking and a large garden backing on to King George's Field. This spacious property offers over 1500 sq ft of flexible accommodation and is being sold with the added bonus of no forward chain.

Kings Avenue is a great location, this highly sought after residential road is located off Vicarage Road and Groveley Road. Sunbury Station which provides a direct service into London Waterloo is approximately half a mile away.

Features

- Detached
- Three/Four Bedrooms
- Two Bathrooms
- Large Garden
- Off Street Parking
- No Forward Chain

Kings Avenue, Sunbury-On-Thames, TW16



Total area (approx.): 140.5 sq. m (1,512.3 sq. ft)
(Excluding Eaves)