



## Beechwood Avenue, TW16

£550,000

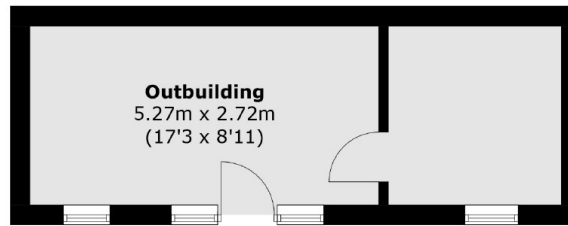
A stunning three/four bedroom end of terrace house with off street parking and a private garden with a large brick built outbuilding. The property is smartly presented throughout and offers a flexible layout.

Beechwood Avenue is a popular road located off Vicarage Road. Sunbury station and the shops at Sunbury Cross are just over half a mile away.

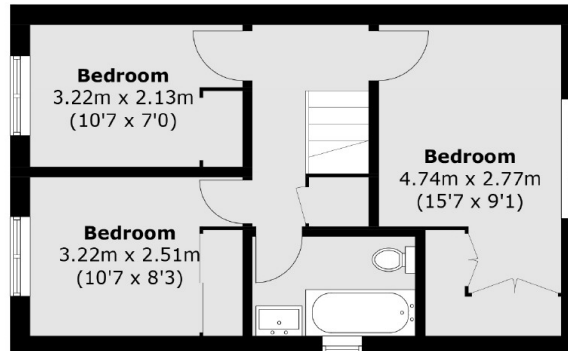
### Features

- End Of Terrace
- Smartly Presented
- Three/Four Bedrooms
- Eat In Kitchen
- Outbuilding
- Off Street Parking

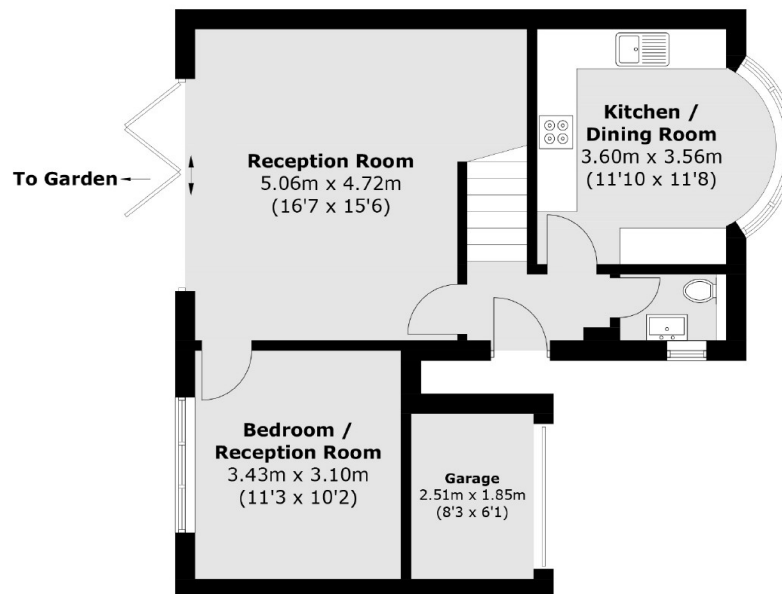
# Beechwood Avenue, Sunbury-On-Thames, TW16



(Not Shown In Actual  
Location / Orientation)



## First Floor



## Ground Floor

Total area (approx.): 88.3 sq. m (950.4 sq. ft)  
Outbuilding / Garage: 26.4 sq. m (284.2 sq. ft)