



## Batavia Road, TW16

£550,000

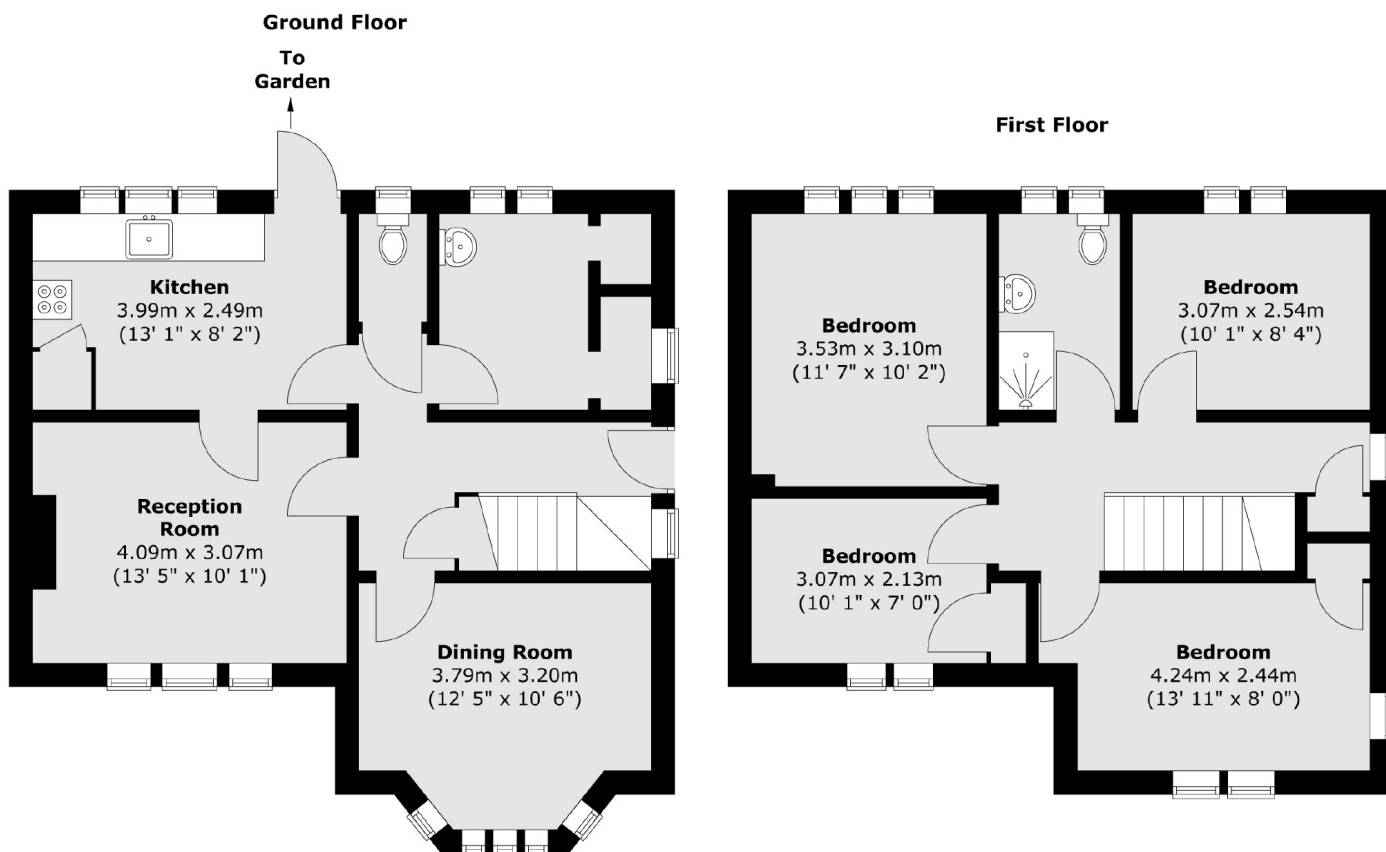
A semi-detached house on a corner plot offering four double bedrooms, separate dining room and a charming rear garden. This property is filled with potential and perfect for a family looking for a house that they can put their own stamp on.

Batavia Road is located off The Avenue and provides easy access to Sunbury Park, the River Thames, riverside pubs, the famous 'Walled Garden' and the village shops. Both Sunbury and Kempton Park stations are also close by.

### Features

- Semi Detached
- Four Bedrooms
- Two Reception Rooms
- Corner Plot
- No Forward Chain
- Filled With Potential

# Batavia Road, Sunbury-On-Thames, TW16



Total area (approx.) : 105.4 sq. m (1135 sq. ft)