



## Green Way, TW16

£499,950

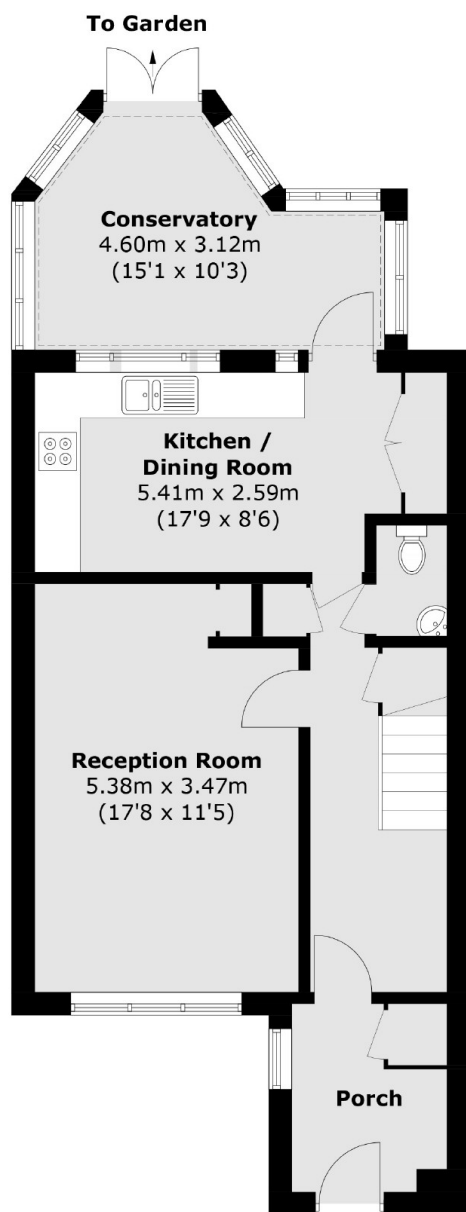
A chain free three bedroom end of terrace house with a private rear garden. This family home over looks fields and has the added bonus of a conservatory.

Green Way is a wonderful location, tucked off Halliford Road and opposite vicarage farm. Both Lower Sunbury and Shepperton are easily accessible.

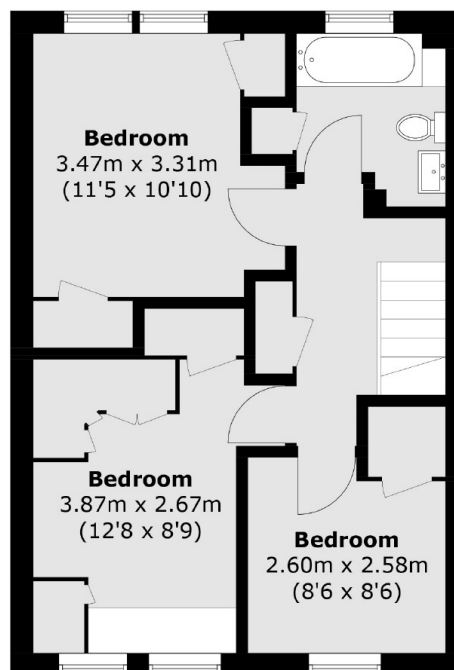
### Features

- End Of Terrace
- Three Bedrooms
- Conservatory
- Downstairs W.C.
- Private Garden
- No Forward Chain

# Green Way, Sunbury-On-Thames, TW16



**Ground Floor**



**First Floor**

Total area (approx.): 106.8 sq. m (1,149.6 sq. ft)