



Staines Road West, TW16

£280,000

A spacious ground floor two bedroom, two bathroom apartment offering open plan living. This modern property is smartly presented and would be ideal for a first time buyer.

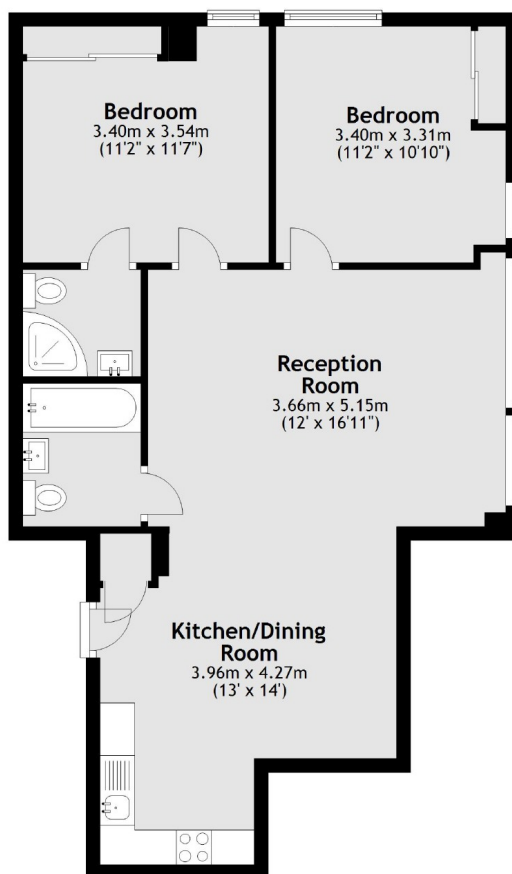
Grandera House is a great location, Sunbury Cross is on your doorstep with the local shops and Sunbury station providing a direct service into London Waterloo.

Features

- Modern Apartment
- Two Bedrooms
- Two Bathrooms
- Allocated Parking
- Open Plan Design
- Close To Station

Staines Road West, Sunbury-On-Thames, TW16

Ground Floor



Total area: approx. 67.7 sq. metres (728.7 sq. feet)