



Rooksmead Road, TW16

£1,180,000

A recently refurbished and smartly presented six bedroom detached house with off-street parking and an amazing rear garden. The original section of the house dates back to 1906 and has been substantially extended to create a beautiful family home.

Rooksmead Road is a great location, everything Lower Sunbury has to offer is easily accessible including the River Thames, Sunbury Park and the 'Walled Garden' and Sunbury station which provides a direct service into Waterloo.

Features

- Detached House
- Six Bedrooms
- Two Bathrooms
- Recently Refurbished
- Large Garden
- Off-Street Parking



Rooksmead Road, TW16

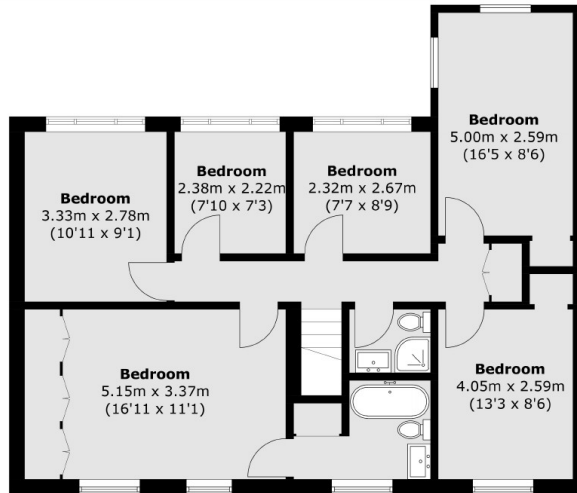
On the ground floor there is a welcoming entrance hallway with a cloakroom, a generous bay fronted reception room, a light and spacious kitchen dining room with leads out on to the garden and a rear reception room with a valuated ceiling. There is also the added bonus of a utility room and a half garage.

On the first floor there is a main bedroom with built in wardrobe and an en suite bathroom, five additional bedrooms and a shower room.

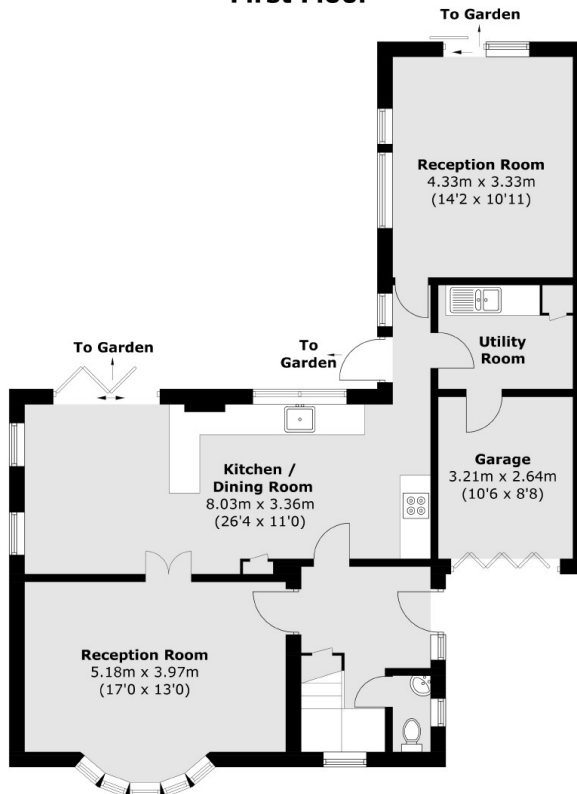
To the front of the property there is an off street parking space and access to the garage. To the rear of the house is an incredible garden which backs on to Cedars Recreation Ground. The house and garden really have to be seen in person to be fully appreciated, call us to arrange a viewing as this is a house you do not want to miss out on.



Rooksmead Road, Sunbury-On-Thames, TW16



First Floor



Ground Floor

Total area (approx.): 169.9 sq. m (1828.7 sq. ft)