



Queensway, TW16

£950,000

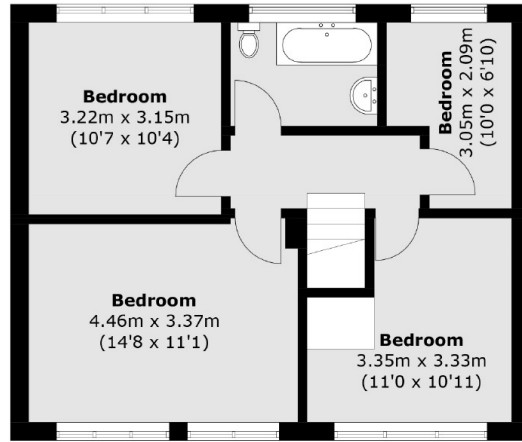
A four bedroom detached house with off street parking and a large L-Shaped Garden with a detached double garage, The house and plot are full of potential and the property is being sold with the added bonus of no forward chain.

Queensway is located in the popular 'Berg Development' in the centre of Lower Sunbury. Everything the village has to offer on your door step including Sunbury Park, the village shops, the River Thames and Sunbury station.

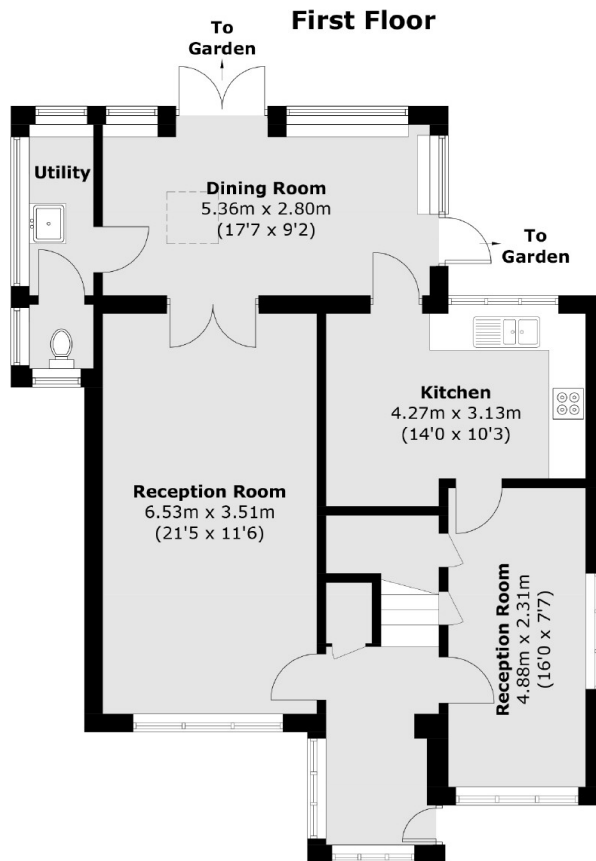
Features

- Detached
- Four Bedrooms
- Three reception Rooms
- Large Garden
- Detached Double Garage
- No Forward Chain

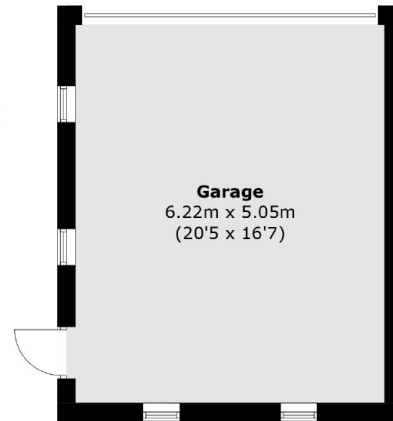
Queensway, Sunbury-On-Thames, TW16



First Floor



Ground Floor



(Not Shown In Actual
Location / Orientation)

Total area (approx.): 132.2 sq. m (1,423.0 sq. ft)

Garage (approx.): 31.4 sq. m (338.0 sq. ft)