



Maryland Way, TW16

£895,000

An extended three bedroom detached house with off street parking a garage and beautiful rear walled garden. This smartly presented family home is ideal for a family looking for a home that they can move straight into.

Maryland Way is an amazing location, this quiet road is located within the popular Berg development in the heart of Lower Sunbury. The local village shops, the River Thames and riverside pubs, Sunbury Park and Sunbury station are all close by.

Features

- Detached
- Three Bedrooms
- Extended Ground Floor
- Garage
- Off Street Parking
- No Forward Chain



Maryland Way, TW16

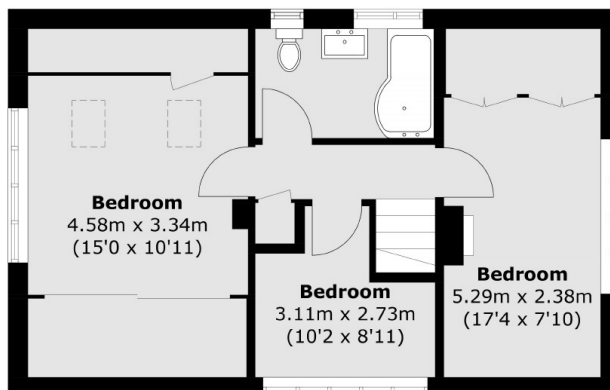
On the ground floor there is a welcoming entrance hallway, a large double length reception room, second reception room, separate kitchen, utility room and the added bonus of a downstairs cloakroom.

On the first floor there is a main bedroom with built in storage, two further bedrooms and a family bathroom. To the front of the property there is a front garden, with off street parking and access to the garage. To the rear of the house there is a great walled garden with a large patio, lawn and mature plants.

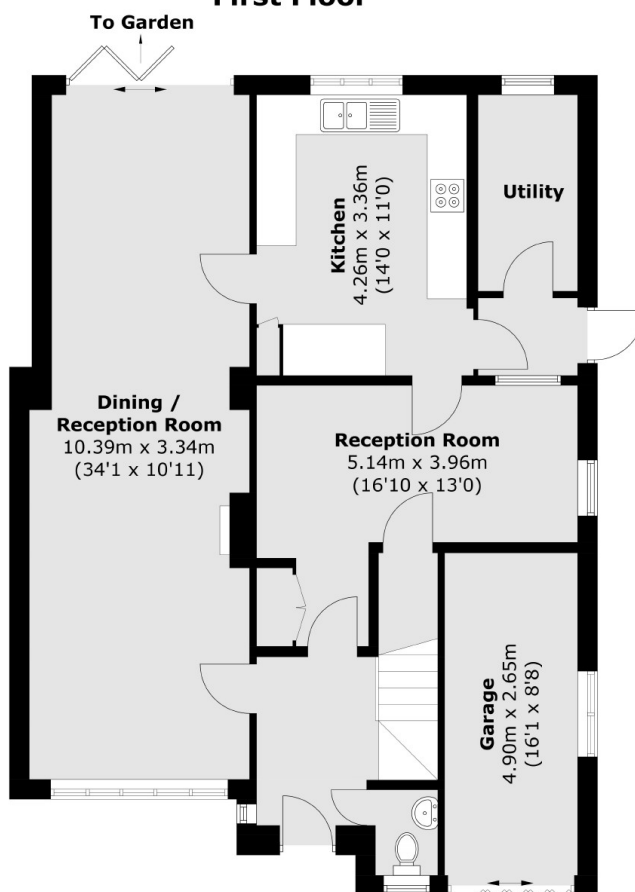
Family houses like this in such good condition and in amazing locations like this do not come on to the market very often. Call us straight away to arrange a viewing to avoid missing out.



Maryland Way, Sunbury-On-Thames, TW16



First Floor



Ground Floor

Total area (approx.): 126.6 sq. m (1,362.6 sq. ft)
Garage : 10.2 sq. m (109.8 sq. ft)