



The Avenue, TW16

£1,600,000

Dexters



The Avenue, TW16

A stunning four bedroom detached house located on a premier road in Lower Sunbury. The property has recently been extended and fully refurbished to create a perfect family home.

On the ground floor there is a welcoming entrance hallway, a bay front reception room, a second reception room which is currently used as a playroom and an incredible open plan kitchen, dining and family space with bi-folding doors that lead out on the garden which is ideal for entertaining. There is also the added bonus of a utility room and a cloakroom.

On the first floor there is a beautiful main bedroom with an en suite bathroom and a walking wardrobe/dressing room, there are three additional bedrooms and a family bathroom.

At the front of the property there is off street parking for three to four cars. To the rear there is a great garden, with a large patio area, an expansive lawn with mature borders.

The Avenue, is the road in Lower Sunbury to live on! Located in the centre of the village, the position is unbeatable! The local village shops, the River Thames and riverside pubs, Sunbury Park and the station which provides a direct service to Waterloo are all close by.

Features

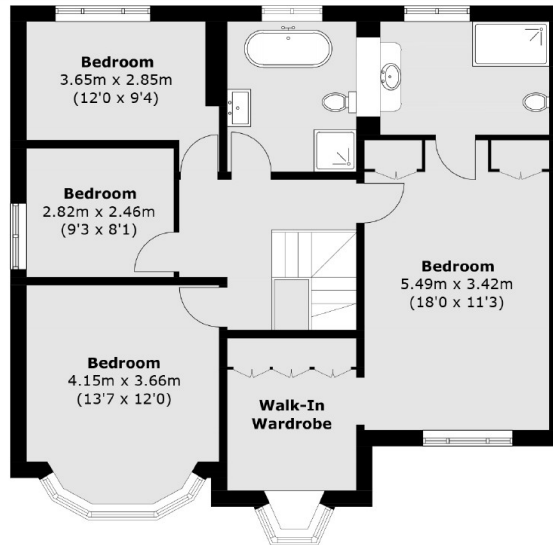
- Detached
- Stunning Condition
- Four Bedrooms
- Open Plan Kitchen
- Utility Room
- Large Rear Garden





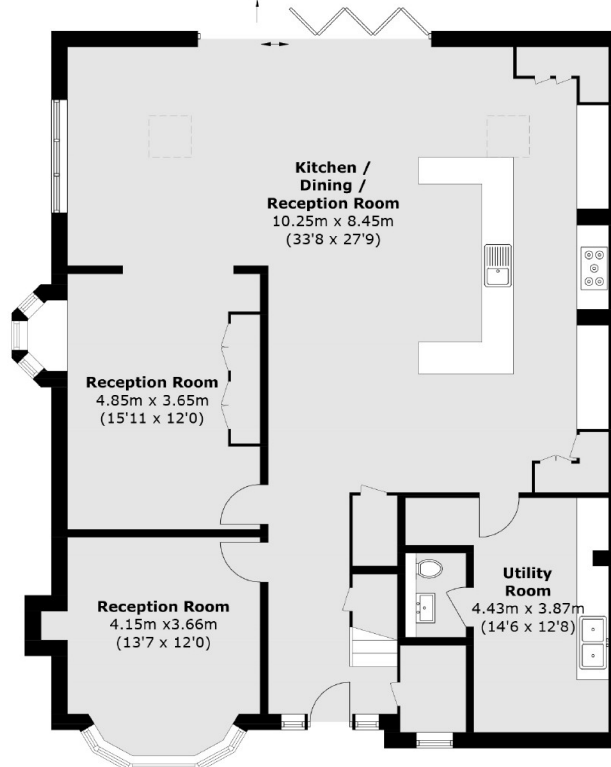


The Avenue, Sunbury-On-Thames, TW16



First Floor

To Garden



Ground Floor

Total area (approx.): 217.5 sq. m (2341.0 sq. ft)