



## Gaston Bridge Road, TW17

£599,950

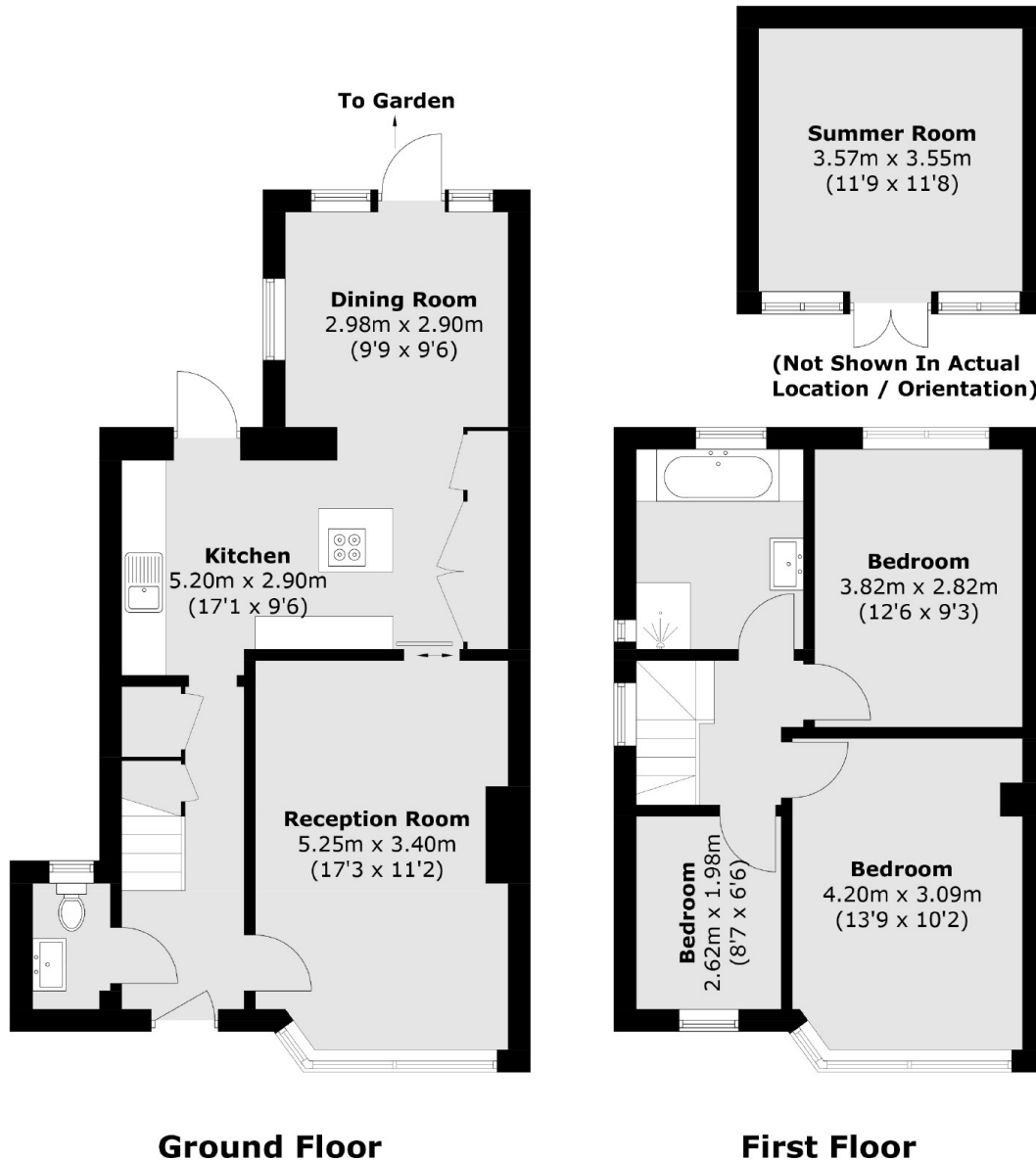
A light and spacious three bedroom extended semi detached house with an outbuilding. This family home is smartly presented throughout and is being sold with the added bonus of no forward chain.

Gaston Bridge Road is located in Upper Halliford on the borders of Sunbury and Shepperton. Shepperton Station, which provides a direct service into Waterloo and High Street are just over half a mile away.

### Features

- Semi Detached
- Three Bedrooms
- Extended Ground Floor
- Open Plan Kitchen
- Downstairs Cloakroom
- No Forward Chain

# Gaston Bridge Road, Shepperton, TW17



Total area (approx.): 93.4 sq. m (1,005.4 sq. ft)  
Summer Room (approx.): 12.8 sq. m (137.8 sq. ft)