



**Thames Street, TW16**

**£1,500,000**

**Dexters**



## Thames Street, TW16

A stunning four bedroom Georgian townhouse backing on to the River Thames with a private mooring and amazing panoramic views. This special property offers over 2100 sq ft of flexible accommodation spread over four floors.

The property has been extensively updated and restored by the current owners to create a wonderful character filled home. On the Lower ground floor there is a bespoke modern kitchen opening out onto the rear garden and a spacious family room. On the raised ground floor there is an impressive reception room offering viewings over Orchard Meadow, additional reception room with river views and steps leading down to the garden.

On the first floor there is a beautiful main bedroom, en-suite bathroom and a large balcony with views over the river. There is also a further bedroom which is currently being used as a dressing room. On the second floor there are two double bedrooms and a family bathroom.

To the rear there is a charming garden, with two patio areas, a lawn, pretty borders and a 25 foot private mooring.

Located in the heart of Lower Sunbury everything the village has to offer is right on your doorstep including Sunbury Park and the local shops and restaurants.

### Features

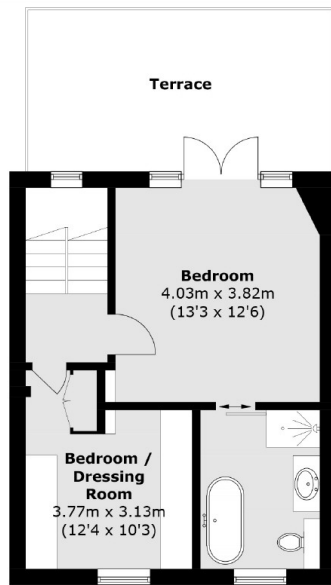
- Riverside Location
- Georgian Townhouse
- Four Bedrooms
- Three Reception Rooms
- Bespoke Modern Kitchen
- 25 Foot Mooring



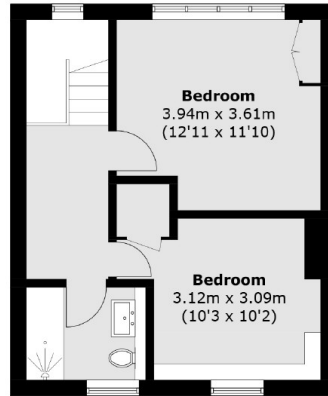




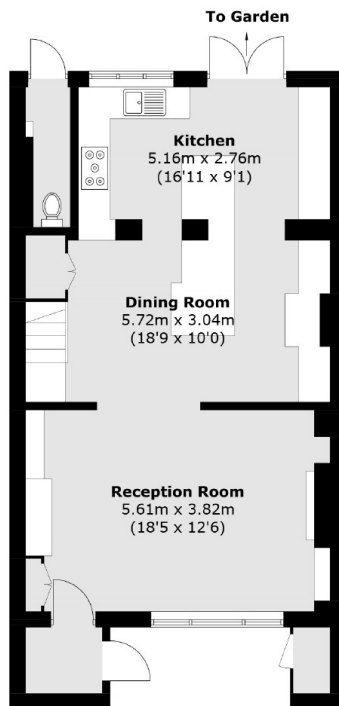
# Thames Street, Sunbury-On-Thames, TW16



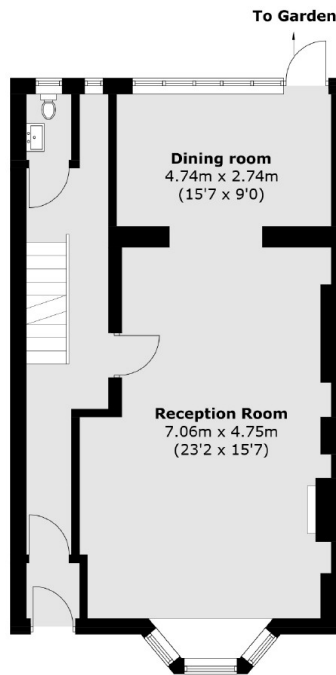
**First Floor**



**Second Floor**



**Lower Ground Floor**



**Ground Floor**

Total area (approx.): 192.6 sq. m (2073.1 sq. ft)

Outbuilding (approx.): 2.4 sq. m (25.8 sq. ft)

Terrace (approx.): 17.5 sq. m (188.4 sq. ft)