



## Harfield Road, TW16

£1,500,000

A five bedroom detached 1930's house with a double garage, off street parking and a large garden. The property has a flexible layout, is beautifully presented throughout and will make a perfect forever family home.

Harfield Road is a great location on the borders of Sunbury and Hampton with the River Thames just at the end of the road.

### Features

- Detached
- Five Bedrooms
- Four Reception Rooms
- Utility Room
- Large Landscaped Garden
- Double Garage





## Harfield Road, TW16

On the ground floor there is a welcoming entrance hallway, three reception rooms, a generous kitchen breakfast room, a utility room and the added bonus of a downstairs W.C.

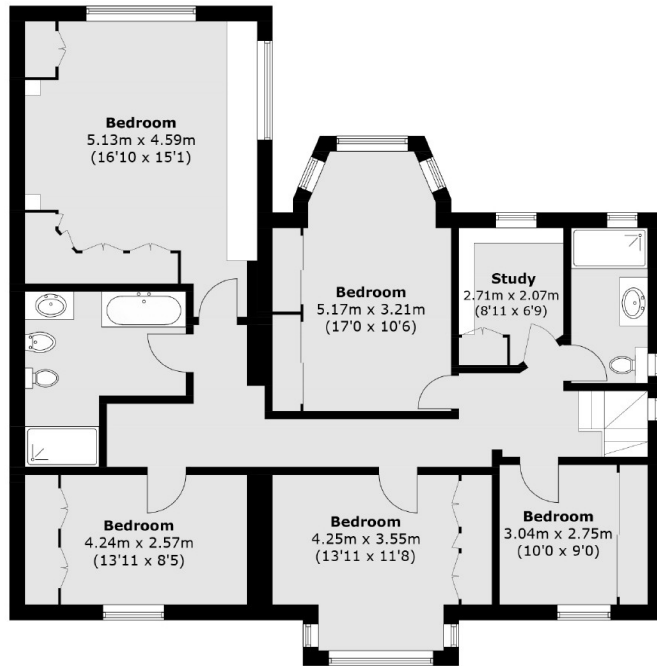
On the first floor, there is a large master bedroom with built in wardrobes, four additional bedrooms and two bathrooms. There is also a study which overlooks the garden.

The amazing mature rear garden sets this house apart, it really has to be seen to be fully appreciated. At the front of the property there is a double garage and off street parking for four/five cars.

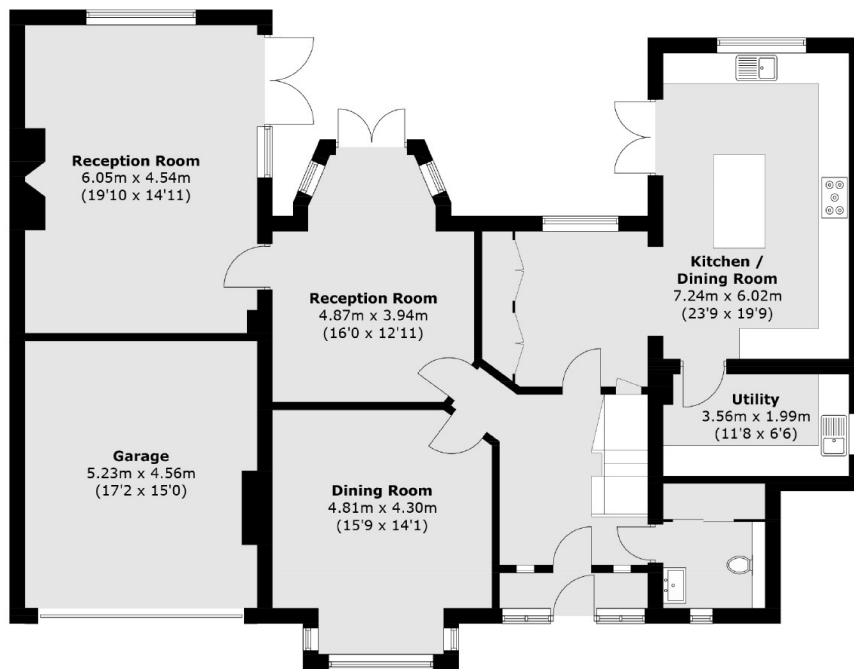




# Harfield Road, Sunbury-On-Thames, TW16



**First Floor**



**Ground Floor**

Total area (approx.): 240 sq. m (2,583.3 sq. ft)  
Garage: 23.9 sq. m (257.2 sq. ft)