



The Avenue, TW16

£1,430,000

A six bedroom detached house with a large rear garden, off street parking and a garage. This spacious property offers a flexible layout and would make ideal forever family home.

The Avenue, is the premier road in Lower Sunbury, located in the centre of the village, the position is unbeatable! Sunbury Station, The local shops, riverside pubs, the River Thames and Sunbury Park are all close by.

Features

- Detached
- Six Bedrooms
- Two Bathrooms
- Two Reception Rooms
- Garage
- Large Garden



The Avenue, TW16

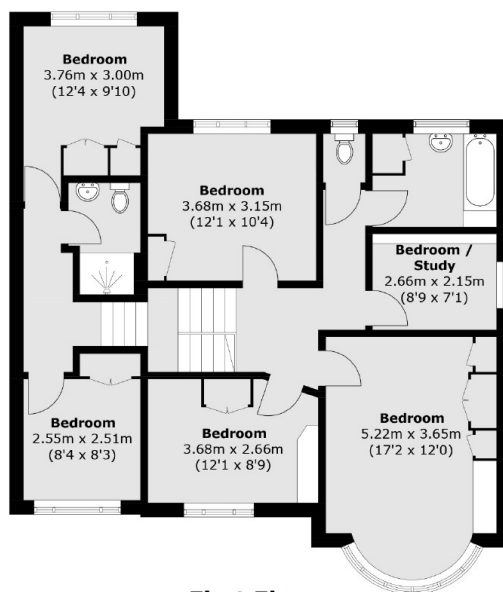
On the ground floor there is a welcoming entrance hallway, a front reception room, a generous rear reception room which leads out to the garden and a kitchen and dining room. There is also the added bonuses of a downstairs cloakroom and a utility room.

On the first floor there are six bedrooms and two bathrooms. To the front of the house there is off street parking for at least four cars and access to the garage. To the rear of the house there is a large South West facing garden with an patio area and an expansive lawn.

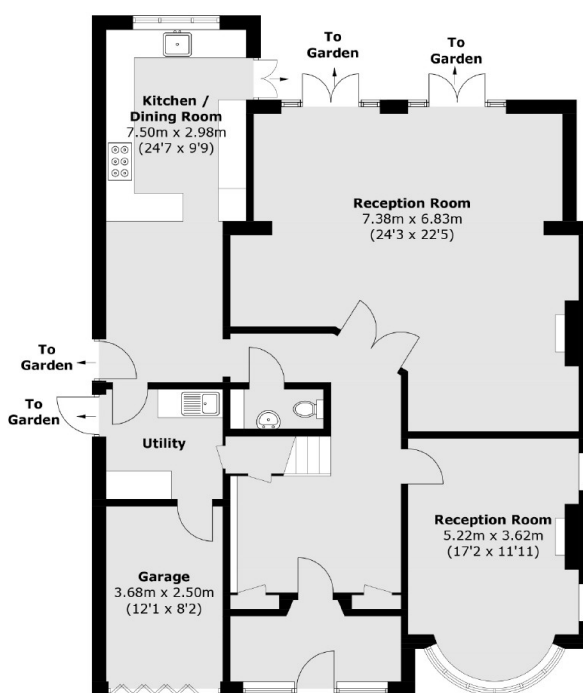
Amazing houses like this do not come on to the market often, especially on The Avenue, so give us a call straight away to arrange a viewing, to avoid missing out on this forever family home.



The Avenue, Sunbury-On-Thames, TW16



First Floor



Ground Floor

Total area (approx.): 217.6 sq. m (2,342.3 sq. ft)