



Nursery Road, TW16

£475,000

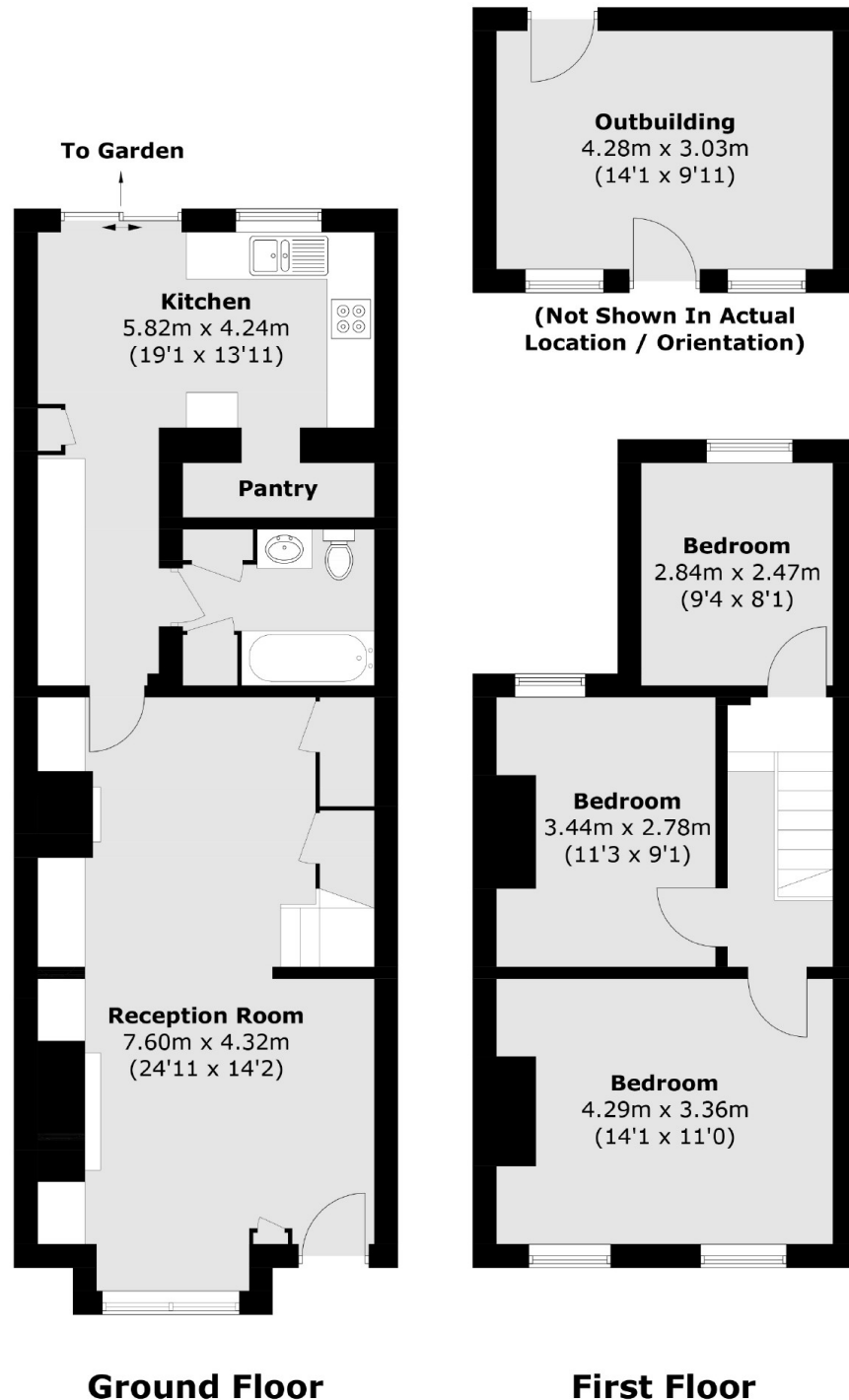
An extended, three bedroom Victorian house with a private south facing garden and a brick built outbuilding/workshop. The property has a light a spacious feel and would make a lovely family home.

Tucked away off the main section of Nursery Road, the house is well located for Upper Halliford Station and the local schools.

Features

- Victorian Mid Terrace
- Three Bedrooms
- Extended Ground Floor
- High Ceilings
- South Facing Garden
- Close to Station

Nursery Road, Sunbury-On-Thames, TW16



Total area (approx.): 94.6 sq. m (1,018.3 sq. ft)
Outbuilding: 13.4 sq. m (144.2 sq. ft)