



Riverside, TW16

£1,195,000

A spacious four bedroom, four bathroom property on the banks of the River Thames with a private mooring. This amazing property offers over 2300 sq ft of flexible accommodation spread over three floors.

This property has a remarkable location on the Lower Hampton Road backing on to the River Thames, Rivermead Island and the local shops in Sunbury Village are all close by.

Features

- Detached
- Four Bedrooms
- Four Reception Rooms
- Four Bathrooms
- Garage
- Private Mooring



Riverside, TW16

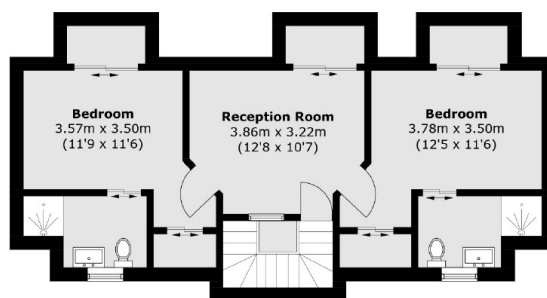
On the lower floor there is a generous reception room, a kitchen, a dining room, a study and a conservatory, this level opens out on to the patio garden and leads down to the River Thames and the private mooring which is approximately 40 ft.

On the middle floor, which is the level you access the property from the Lower Hampton Road, there are two generous double bedrooms, both with en-suite bathrooms and a further study area.

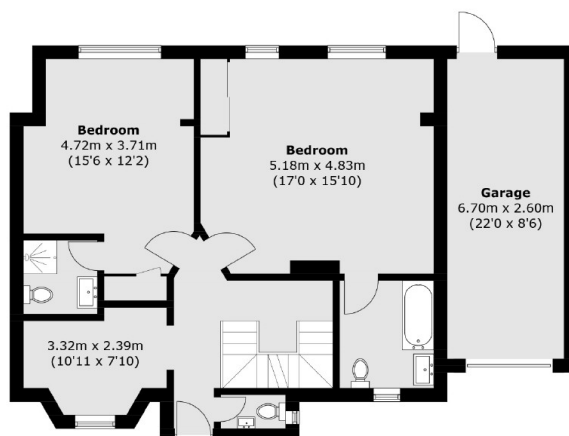
On the top floor there are two additional double bedrooms both with en suite shower rooms and balconies with views over the River Thames. There is also an additional room currently used as a further reception room.



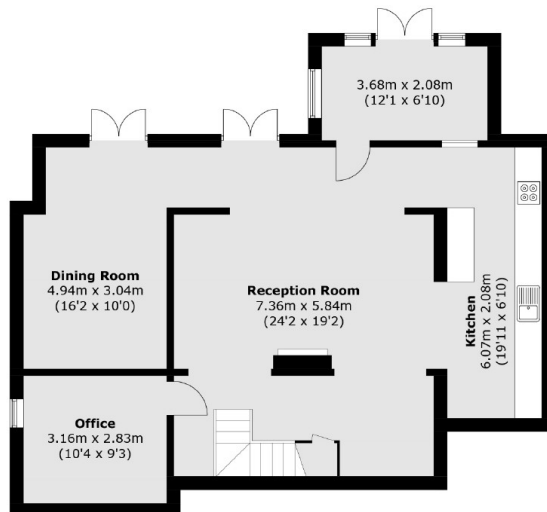
Riverside, Sunbury-On-Thames, TW16



Second Floor



Ground Floor



Lower Ground Floor

Total area (approx.): 217.6 sq. m (2342.2 sq. ft)
Garage area (approx.): 17.5 sq. m (188.4 sq. ft)