



Lawlor Close, TW16

£750,000

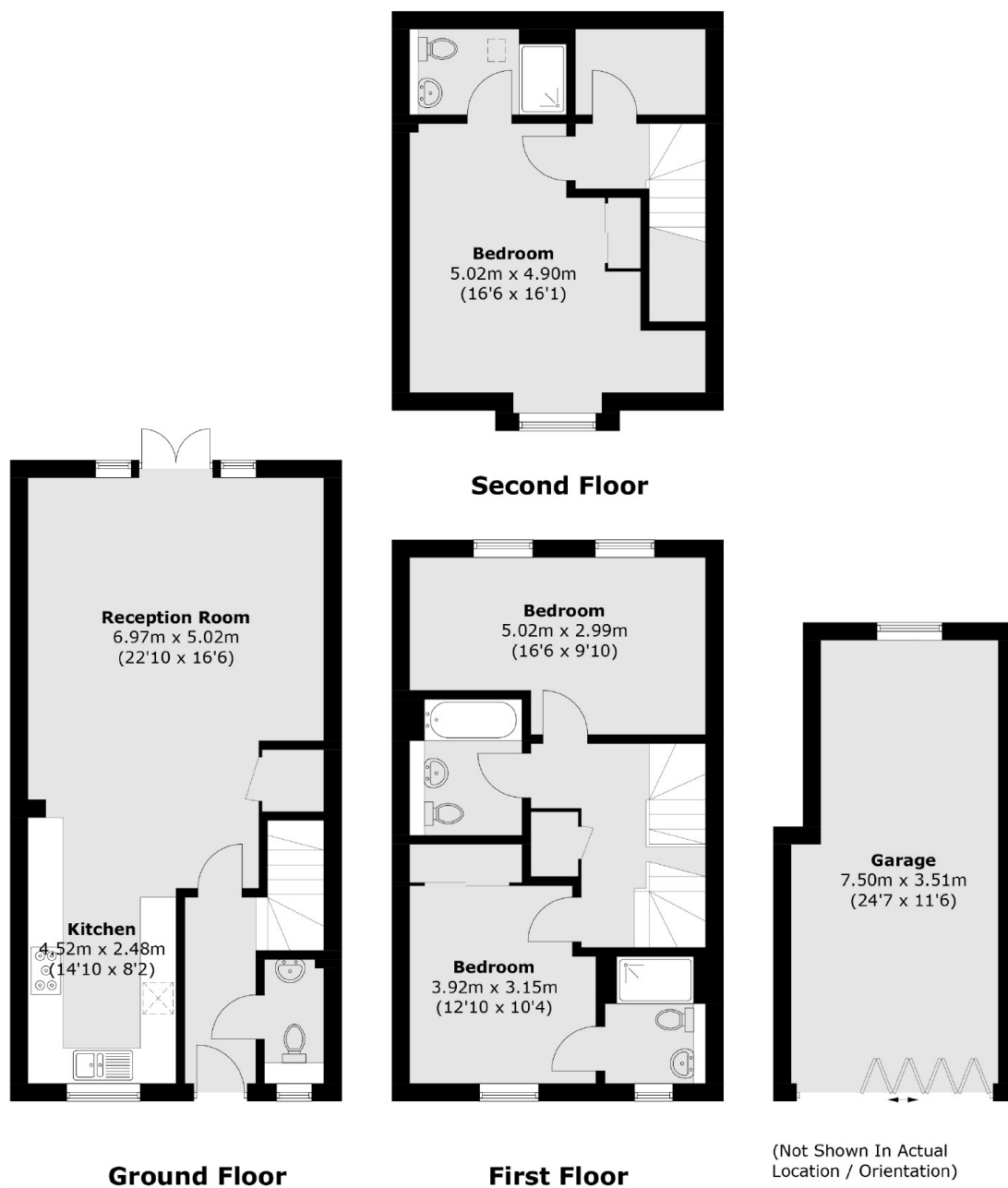
A three bedroom modern house built by Crest Nicholson in 2015. This spacious family home really is impressive offering over 1350 sq ft of accommodation spread over three floors, with a garage and the added bonus of no forward chain.

Lawlor Close is an amazing location, just off of the Avenue in Lower Sunbury. The Village shops, Sunbury Park, the Walled Garden and the River Thames are all close by. Sunbury station is under half a mile away and provides a direct service to Waterloo.

Features

- Modern House
- Three Bedrooms
- Three Bathrooms
- Allocated Parking
- Garage
- No Onward Chain

Lawlor Close, Sunbury-On-Thames, TW16



Total area (approx.): 127.4 sq. m (1,371.3 sq. ft)
Garage area (approx.): 25.0 sq. m (269.1 sq. ft)