



## Marlborough Road, TW15

£799,950

A Detached Edwardian four-bedroom house which has been beautifully maintained by the current owners to create the perfect family home which has many original period features.

Marlborough is a great road located just over half a mile (0.6) from Ashford Station, with easy access to the M3 Motorway, A316 and Heathrow Airport less than 5 miles away (4.1)

### Features

- Detached House
- Four Bedrooms
- Three Reception Rooms
- Chain Free
- Period Features
- Large Garden



## Marlborough Road, TW15

This stunning family home boasting nearly 2,000 square feet of living accommodation is set over two floors and really has to be seen to be fully appreciated. As you approach the beautiful stain glassed front door you are immediately invited into a welcoming entrance hallway with two large reception rooms either side of you and original fireplaces, high ceilings and ornate cornicing. Without a doubt this family home will leave you totally wowed! Especially If you love and appreciate a traditional period home with original features.

On the ground floor there is a large kitchen breakfast room, with the added benefit of having utility room off the back of that, leading onto a mature large private garden perfect for those summer barbeques! Adjacent to the kitchen is another large reception room which is perfect for entertaining and dining your friends and family all year round.

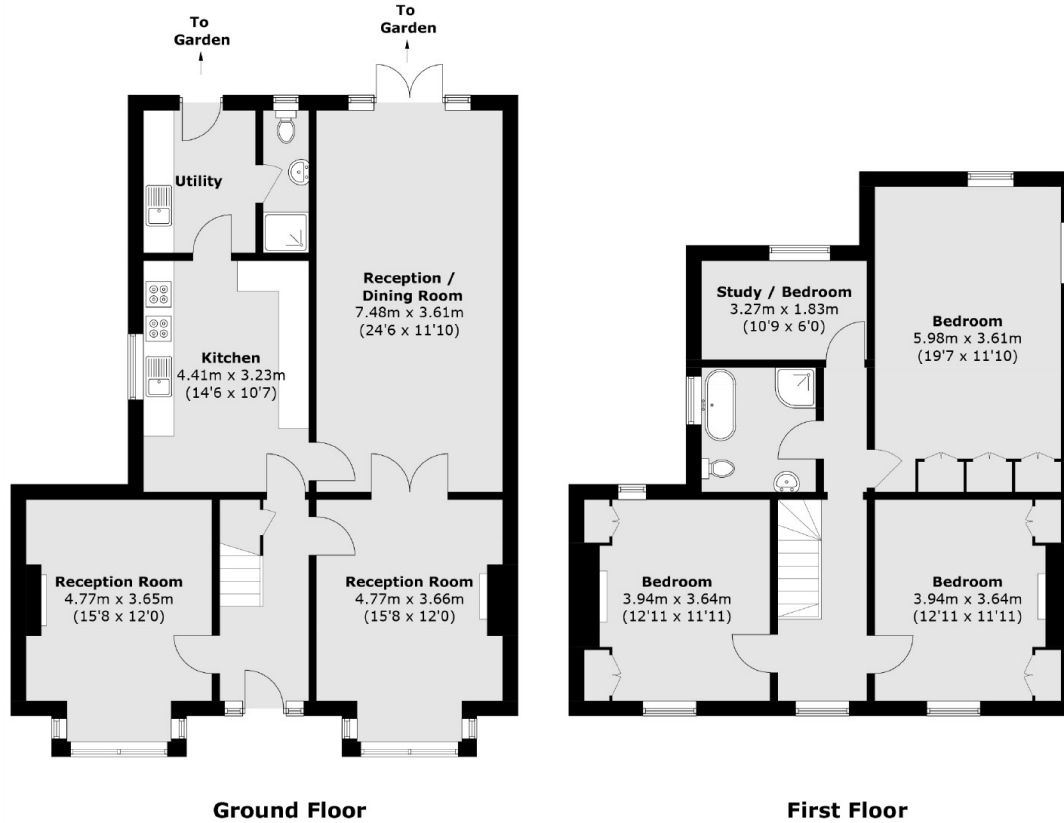
On the first floor there are four large bedrooms and a family bathroom. All of the rooms are streaming with light thanks to the beautiful Victorian sash windows.

Early viewings are most definitely recommended as this is the kind of home is something you will not want to miss out on!





# Marlborough Road, Ashford, TW15



Total area (approx.): 170.0 sq. m (1,829.9 sq. ft)