



**Staines Road East, TW16**

**£1,080,000**

**Dexters**



## Staines Road East, TW16

A spacious four bedroom, two bathroom detached house with a large rear garden, off-street parking for four cars and studio/workshop. This beautiful family home is smartly presented throughout and ready for the new owners to move straight in.

On the ground floor there is a welcoming entrance hallway, a front living room, separate W.C, a modern kitchen and an L-shaped reception/dining room, which leads out onto the stunning rear garden. The ground floor also benefits from under floor heating. On the first floor there is a master bedroom with an impressive vaulted ceiling, built in wardrobes and a beautiful en suite bathroom. There is a further three bedrooms and a family bathroom. To the rear of the property is an incredible garden with mature borders, trees and an expansive lawn. This amazing house has the added bonus of a large workshop, which could also be used as a gym and a home office/studio overlooking the garden.

Staines Road East is on the borders of Lower Sunbury and Hampton, situated in a great location close to Sunbury Village. Hampton Station, Hampton Court Palace and Kingstown town Centre are easily accessible. Kempton Park Racecourse and the River Thames are also close by.

### Features

- Detached House
- Four Bedrooms
- Two Reception Rooms
- Home Office
- Large Garden
- Off-Street Parking





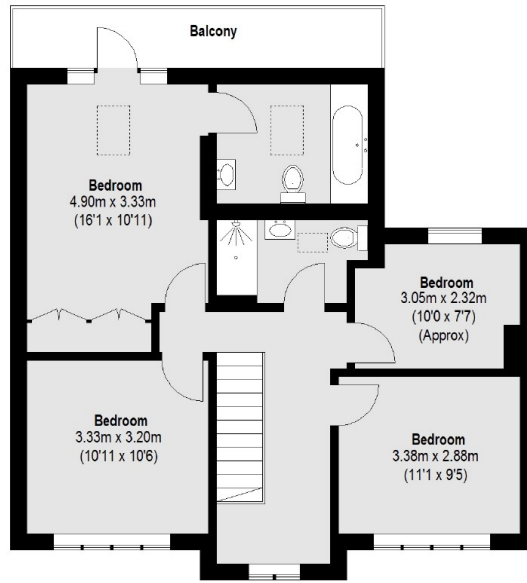








# Staines Road East, Sunbury-On-Thames, TW16



First Floor



Ground Floor

Total area (approx.): 149.87 sq. m (1613 Sq. ft)  
Workshop / Gym / Studio: 42.08 sq. m (453 Sq. ft)  
Balcony: 7.48 sq. m (81 Sq. ft)