



Priory Close, TW16

£699,950

Dexters



Priory Close, TW16

A stunning four bedroom extended family home with off street parking. This spacious family home is immaculately presented throughout and is ready for the new owners to just unpack.

On the ground floor there is a welcoming entrance hallway, a separate front reception room, an incredible open plan kitchen, dining and family room with large sliding doors opening out on to the rear garden. There is the added bonus of utility room and downstairs cloakroom.

On the first floor there are three bedrooms and a family bathroom. The top floor has been converted to create a lovely master bedroom with an en suite shower room.

To the front of the property there is off street parking for two cars, to the rear of the house there is a beautiful rear garden, with a generous patio area and a large lawn.

Priory Close is a quiet cul de sac located off the Staines Road East. Sunbury Station which provides a direct service into London Waterloo is close by.

Features

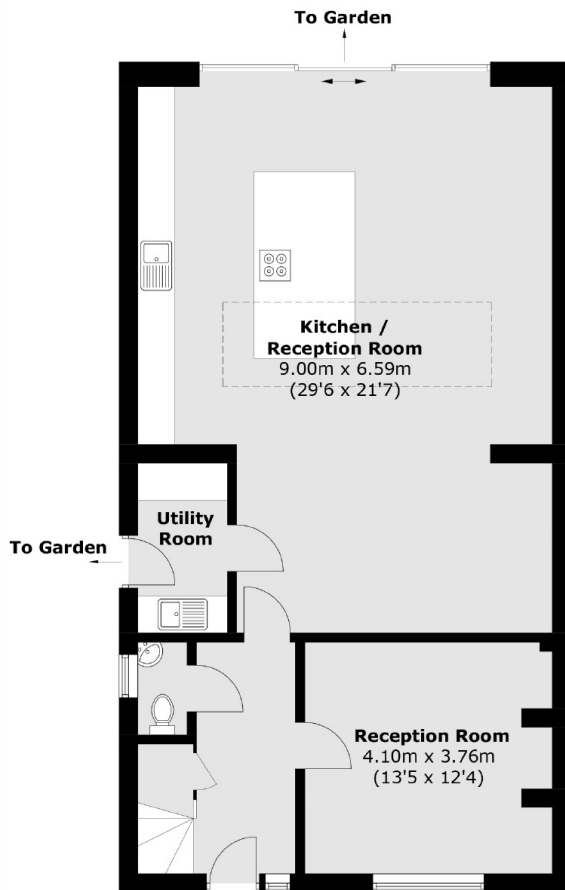
- Semi Detached
- Open Plan Kitchen
- Four Bedrooms
- Two Bathrooms
- Utility Room
- Off Street Parking



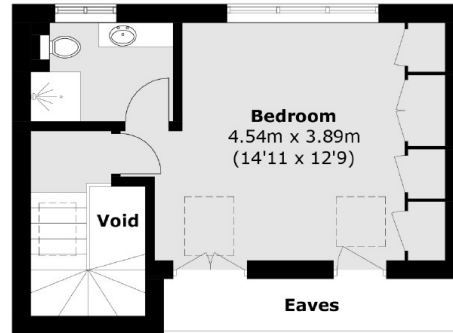




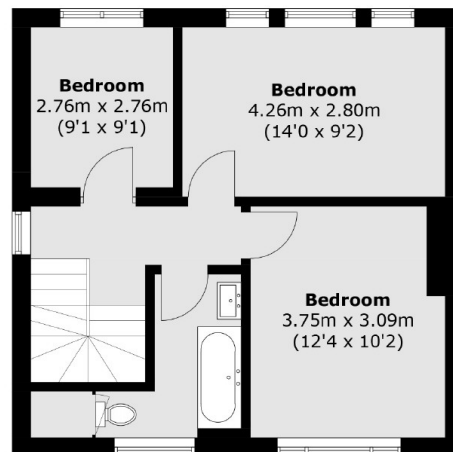
Priory Close, Sunbury-On-Thames, TW16



Ground Floor



Second Floor



First Floor

Total area (approx.): 159.1 sq. m (1,712.5 sq. ft)
(Excluding Eaves)