



Evelyn Crescent, TW16

£525,000

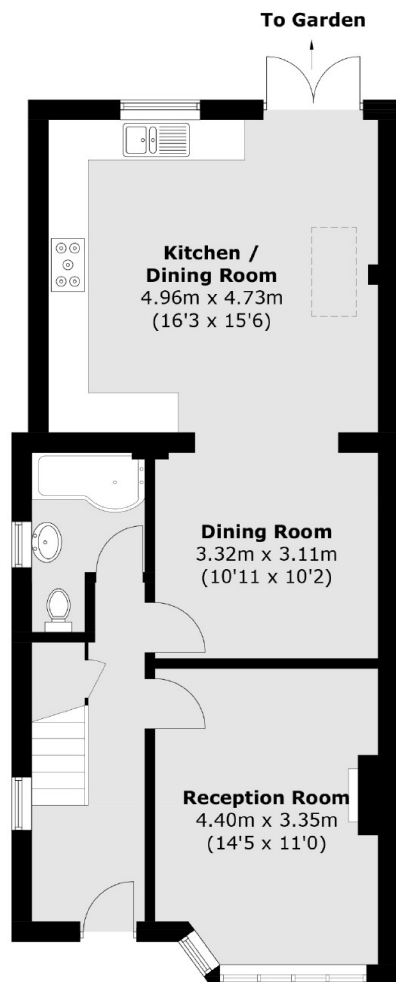
An extended three bedroom end of terrace family home in a popular Lower Sunbury location with off street parking, two bathrooms, studio/home office in the garden and no onward chain

Evelyn Crescent is close to local schools and moments from Upper Halliford Train Station with links to London Waterloo.

Features

- No Onward Chain
- Kitchen Diner
- Two Bathrooms
- Off Street Parking
- Close to Local Schools
- End Of Terrace

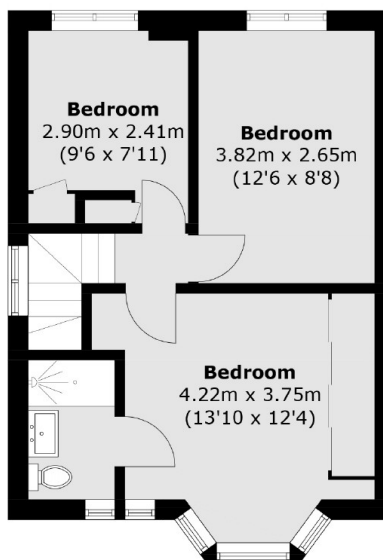
Evelyn Crescent, Sunbury-On-Thames, TW16



Ground Floor



(Not Shown In Actual Location / Orientation)



First Floor

Total area (approx.): 101.2 sq. m (1,089.3 sq. ft)
Studio / Store (approx.): 25.1 sq. m (270.1 sq. ft)