



Kenton Avenue, TW16

£550,000

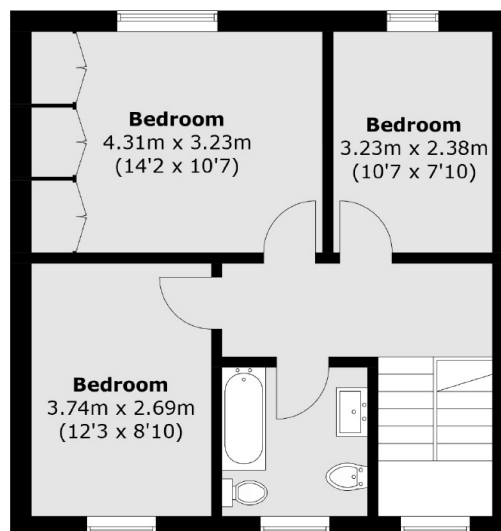
A four bedroom town house with views over Sunbury Cricket Club. This property offers a great deal of versatility with over 1500 sq ft of accommodation spread over three floors, this spacious family home is full of potential.

Kenton Avenue is a popular residential road located in Lower Sunbury between Staines Road East and Lower Hampton Road providing easy access to the River Thames. Additionally the local shops in Sunbury Village and Hampton are both easily accessible.

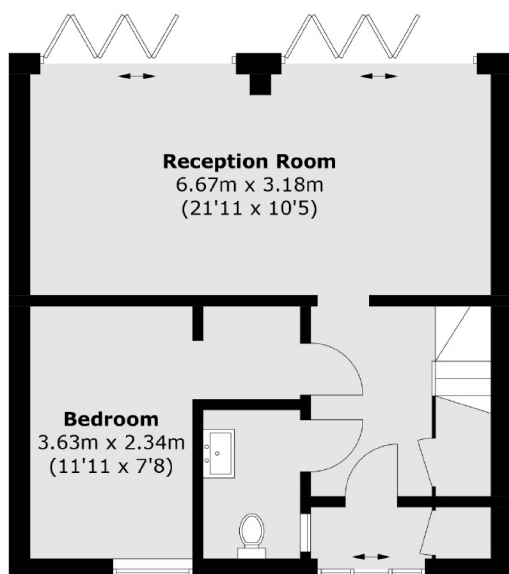
Features

- Town House
- Four Bedrooms
- Flexible layout
- Off Street Parking
- South/West Facing Garden
- Cricket Club Views

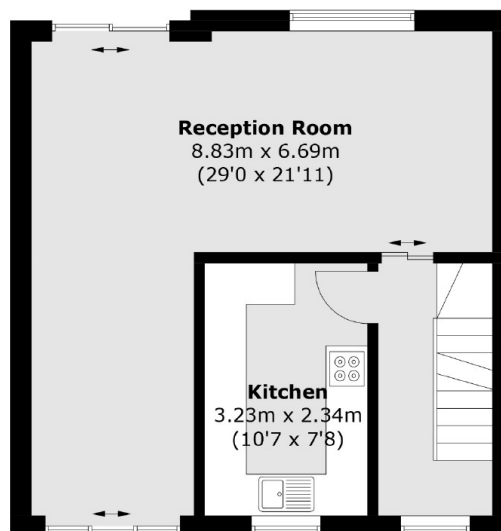
Kenton Avenue, Sunbury-On-Thames, TW16



Second Floor



Ground Floor



First Floor

Total area (approx.): 140.8 sq. m (1,515.6 sq. ft)