



## Vereker Drive, TW16

£789,000

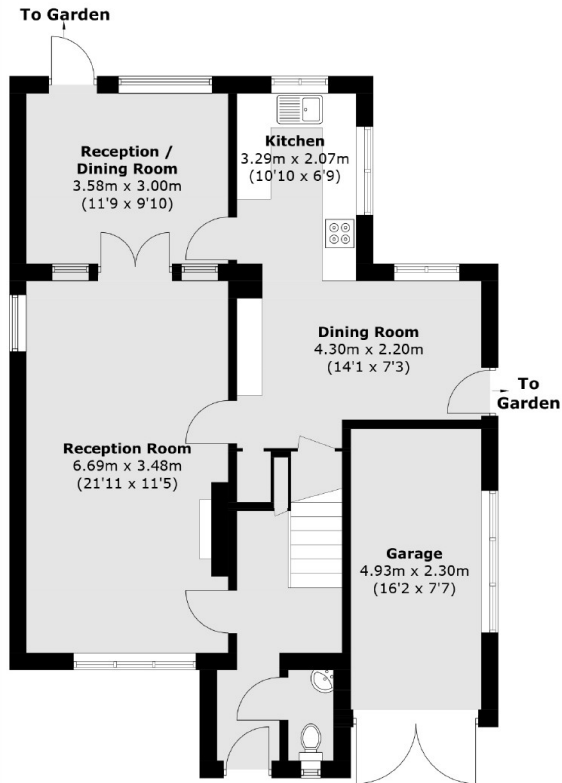
A four bedroom detached house with off street parking and a garage. The property has been extended on the ground floor and is full of potential for a family looking for a home that they can put their own stamp on.

Vereker Drive is an amazing location within the popular Berg development in the heart of Lower Sunbury. Everything Sunbury Village has to offer is close by including the local village shops, the River Thames and riverside pubs, Sunbury Park and Sunbury station are all close by.

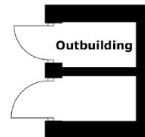
### Features

- Detached
- Four Bedrooms
- Extended Ground Floor
- Garage
- Off Street Parking
- No Forward Chain

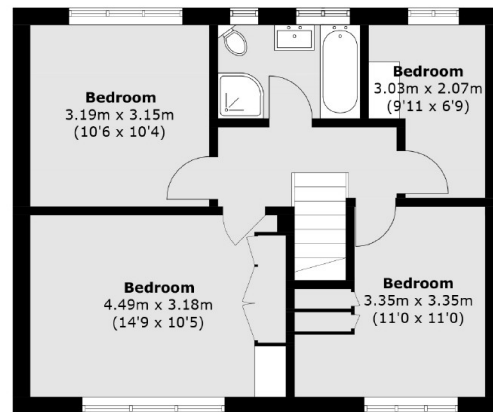
# Vereker Drive, Sunbury-On-Thames, TW16



**Ground Floor**



**(Not Shown In Actual  
Location / Orientation)**



**First Floor**

Total area (approx.): 118.2 sq. m (1272.3 sq. ft)  
Garage: 11.4 sq. m (122.7 sq. ft)  
Outbuilding: 2.5 sq. m (26.9 sq. ft)