



Kenton Avenue, TW16

£1,200,000

A smartly presented, five bedroom detached bungalow located on this highly sought after road with off street parking and a beautiful garden. The property is situated on a large plot, approximately a 1/4 of an acre, and offers over 2300 sq ft of flexible accommodation.

Kenton Avenue is a tree lined residential road located off Lower Hampton Road and Staines Road East on the borders of Lower Sunbury and Hampton. The River Thames is at the end of the road and the local village shops, are easily accessible.

Features

- Five Bedrooms
- Detached Bungalow
- Large Plot
- Beautiful Garden
- Off Street Parking
- Flexible Accommodation



Kenton Avenue, TW16

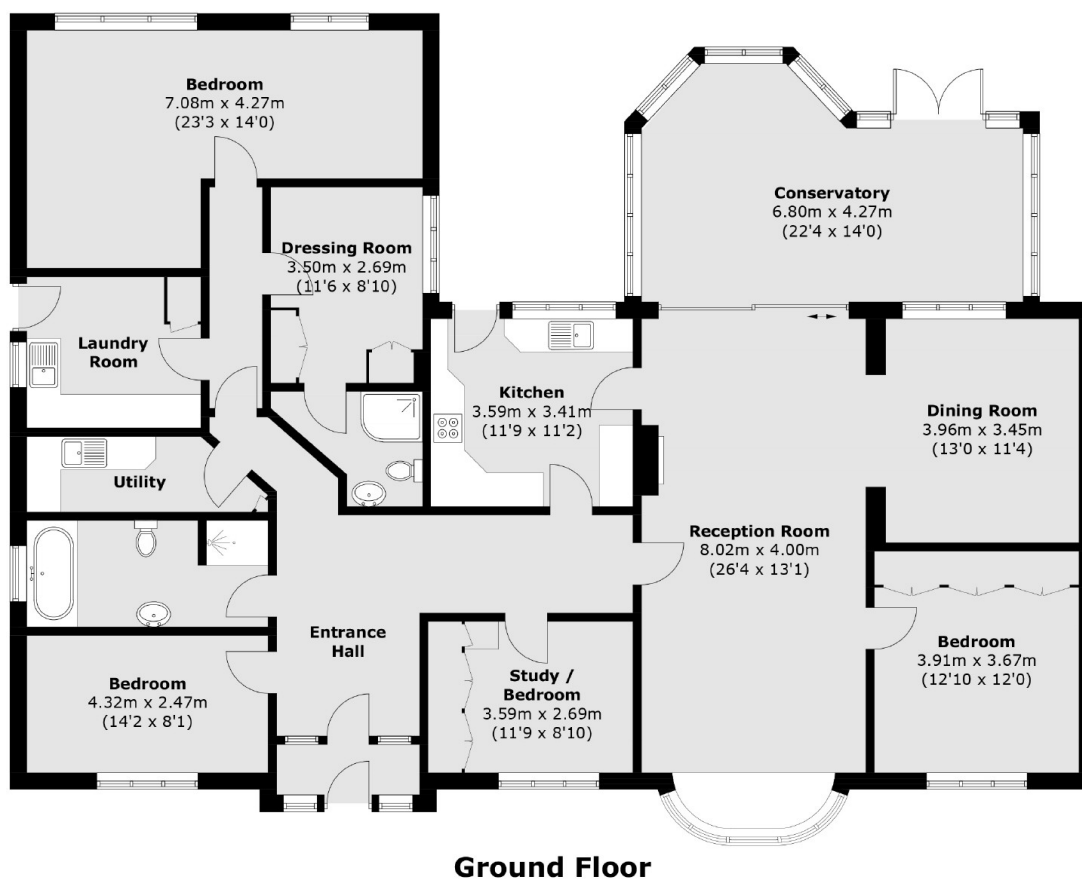
This unique property has a flexible layout and offers further scope to extend subject to planning permission. The house currently comprises of a welcoming entrance hall, a modern kitchen, a large L-shaped reception room with dining area, feature fireplace and a conservatory which opens out on to the rear garden.

Additionally, there are five bedrooms, one of which is currently used as a dressing room, two bathrooms, a utility room and a laundry. There is also a large loft space with potential to convert into further bedrooms (STPP).

To the rear of the property is a beautiful landscaped garden benefiting from outside lighting and backing on to green fields which currently has horses on. At the front of the property is a large driveway with off street parking for four cars.



Kenton Avenue, Sunbury-On-Thames, TW16



Total area (approx.): 215.9 sq. m (2323.9 sq. ft)