



Clifden Road, TW1

£449,950

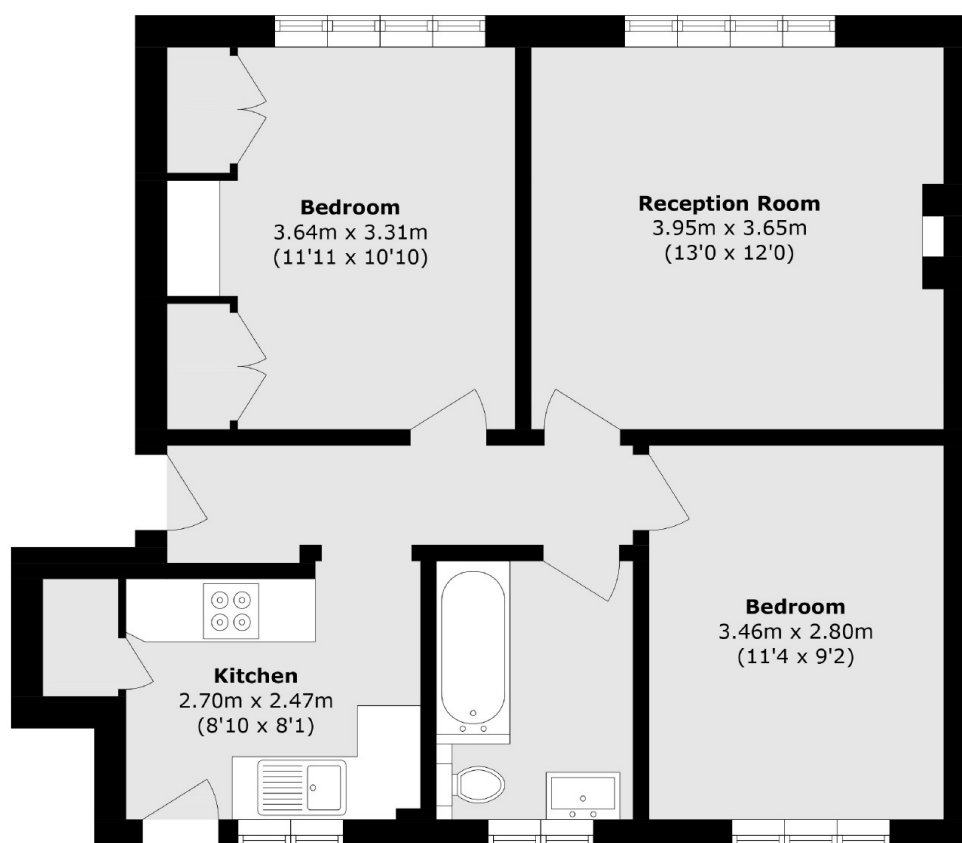
Offered with no onward chain is this spacious two double bedroom ground floor purpose built apartment located on a premier road in Twickenham and it benefits from having a share of the freehold and access to pretty communal gardens.

Clifden Road is a highly sought after road located off Twickenham high street where you will find a vast array of shops, pubs and restaurants. The mainline station with its fast link to Waterloo is less than a mile away and there are also a number of excellent schools nearby

Features

- Two Double Bedrooms
- No Onward Chain
- Communal Gardens
- Central Location
- Share Of Freehold
- Ground Floor

Clifden Road, Twickenham, TW1



Total area (approx.): 56 sq. m (602.7 sq. ft)

Dexters

Twickenham
84 Heath Road
Twickenham
TW1 4BW
Sales
020 8744 0074

Energy Rating: D. We aim to make our particulars both accurate and reliable. However they are not guaranteed; nor do they form part of an offer or contract. If you require clarification on any points then please contact us, especially if you're traveling some distance to view. Please note that appliances and heating systems have not been tested and therefore no warranties can be given as to their good working order.

 **RICS** | Regulated
Estate Agent
and Letting Agent

[dexters.co.uk](https://www.dexters.co.uk)