



## Strawberry Vale, TW1

### £1,250,000

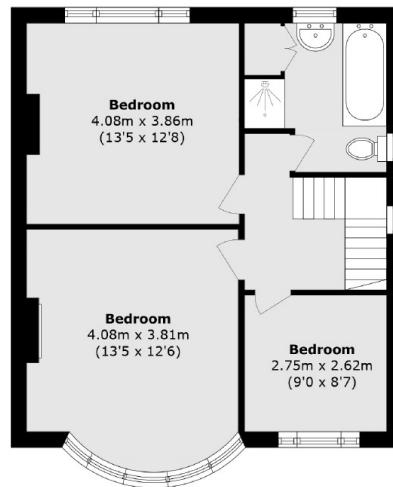
A beautiful three bedroom 1930's semi detached house that would be a wonderful family home for years to come. The property benefits from having two reception rooms, a downstairs W.C with a utility room, potential to extend the loft and the rear, off street parking to the front and a sunny South West facing garden.

Strawberry Vale runs adjacent to the River Thames and is close to Teddington and Twickenham town centres, which offer a vast array of shops, bars, restaurants and independent boutiques. Strawberry Hill and Twickenham mainline stations are just half a mile away and provide routes to and from the city.

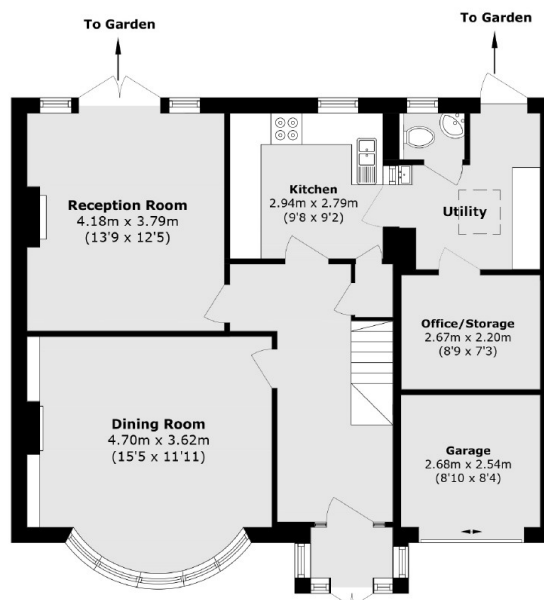
### Features

- Three Bedrooms
- Off Street Parking
- Potential To Extend
- Side Access
- South West Facing Garden
- Downstairs W.C & Utility Room

# Strawberry Vale, Strawberry Hill, TW1



**First Floor**



**Ground Floor**

Total Internal area (approx.): 130.2 sq. m (1401.4 sq. ft)  
(Excluding Garage)  
Garage area (approx.): 6.8 sq. m (73.1 sq. ft)  
Total area (approx.): 137.7 sq. m (1482.2 sq. ft)  
(Including Garage)