



## Lincoln Avenue, TW2

### £649,950

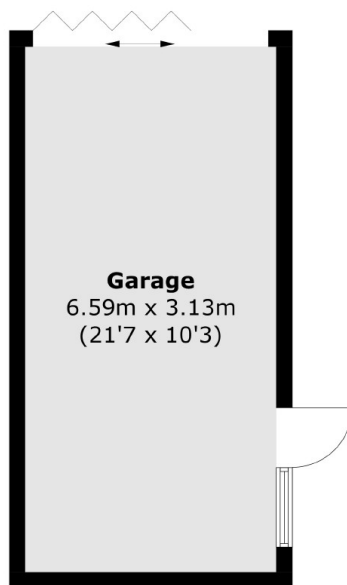
Offered with no onward chain is this spacious three bedroom 1930's house that could be a wonderful family home for years to come. The property benefits from having off street parking to the front, a large private garden with a garage and potential to extend and the loft if required.

Lincoln Avenue is a fantastic residential street in a popular area of Twickenham. The property is close to Kneller Gardens Park, the River Thames and Whitton mainline station with its fast trains into London Waterloo. There are excellent state and private schools nearby (eg. Waldegrave Girls, Archdeacon, St. James and The Mall), two royal parks and many pleasant, green open spaces.

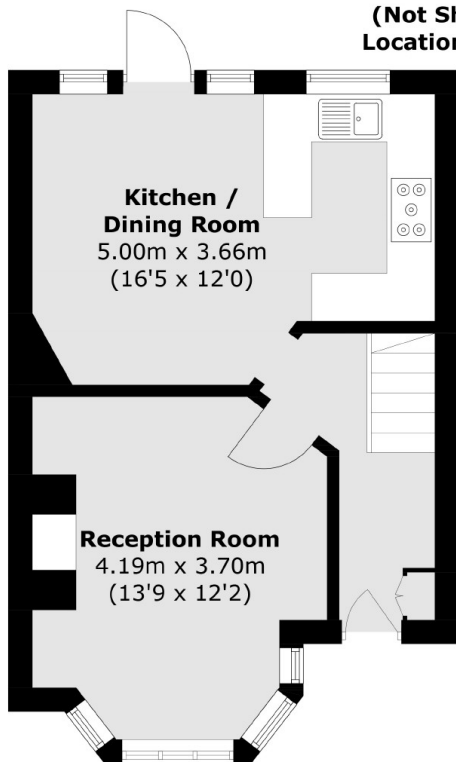
### Features

- Three Bedrooms
- No Onward Chain
- Off Street Parking
- Garage
- Large Private Garden
- Potential To Extend The Loft & Rear

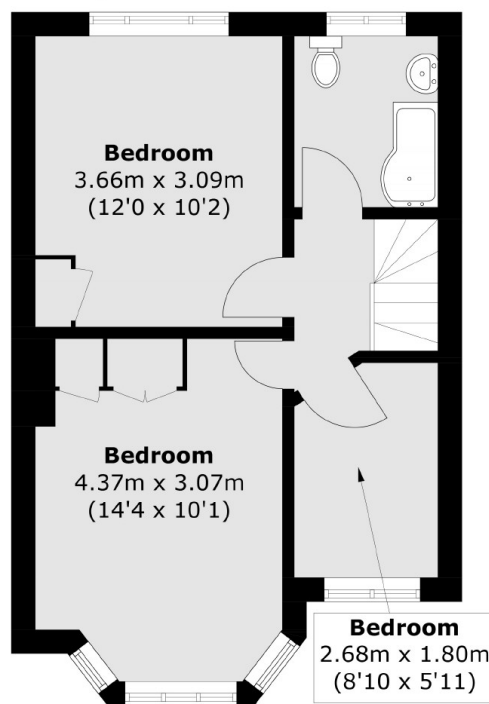
# Lincoln Avenue, Twickenham, TW2



(Not Shown In Actual  
Location / Orientation)



**Ground Floor**



**First Floor**

Total area (approx.): 75.2 sq. m (809.4 sq. ft)  
Garage area (approx.): 20.8 sq. m (223.9 sq. ft)