



May Road, TW2

£939,950

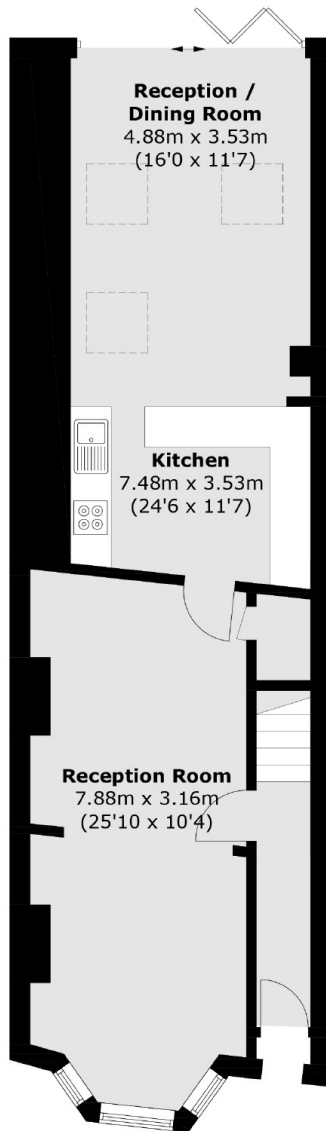
Situated down a highly sought after road is this spacious four bedroom end of terrace Victorian family home. The property benefits from having a stylish open plan kitchen/family room complete with bi-fold doors opening onto the South West facing rear garden.

May Road is situated just behind Twickenham Green whilst also being close to Twickenham high street, where you will find a vast array of shops, pubs and restaurants. There are a number of excellent schools in the area and both Twickenham and Whitton stations have a fast links to London Waterloo.

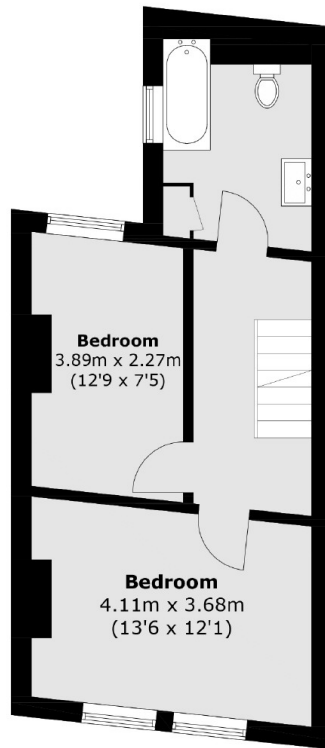
Features

- Four Bedrooms
- End Of Terrace
- Two Bath/Shower Rooms
- South West Facing Garden
- Excellent Condition
- Open Plan Kitchen/Family Room

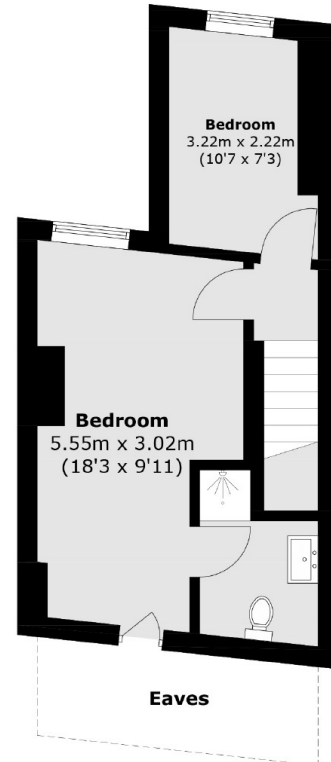
May Road, Twickenham, TW2



Ground Floor



First Floor



Second Floor

Total area (approx.): 124.6 sq. m (1,341.2 sq. ft)
(Excluding Eaves)