



## Crane Road, TW2

£1,050,000

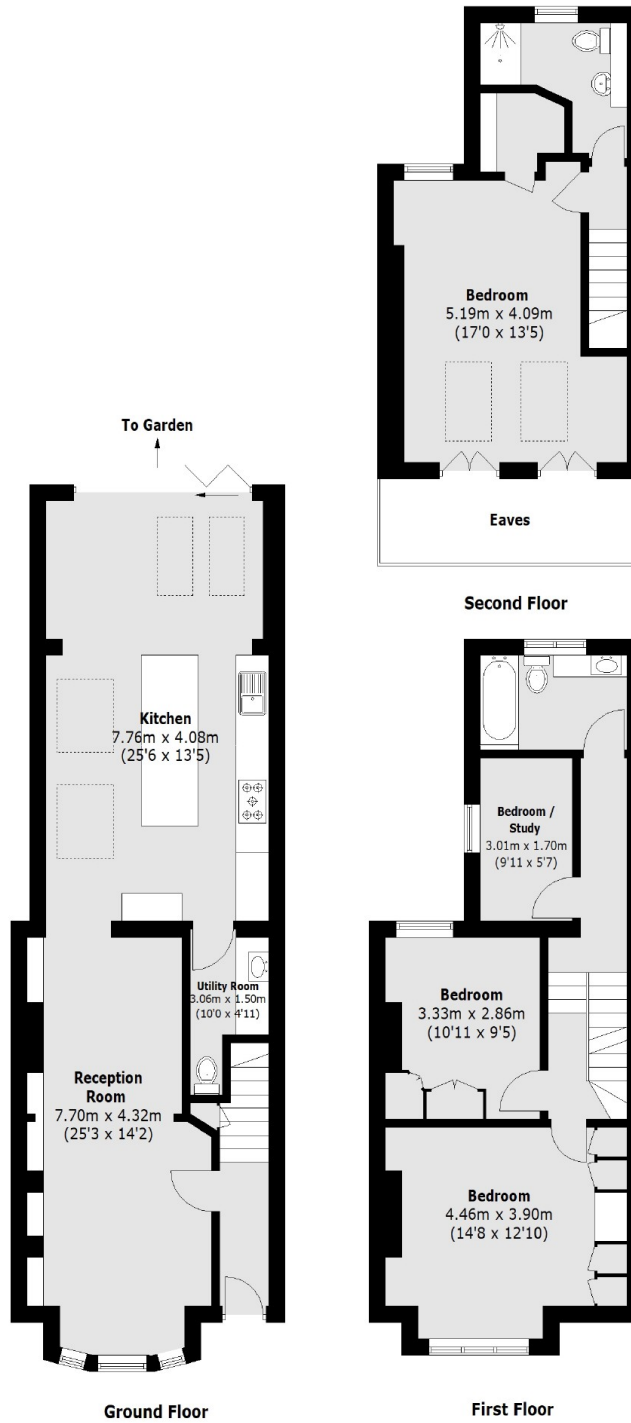
Arguably one of the finest period houses on the market is this beautiful four bedroom Victorian family home occupying over 1500sq feet of impressive accommodation. The house benefits from having two bath/shower rooms, a downstairs W.C with utility and an eye catching open plan kitchen/family room.

Crane Road is an extremely desirable road, just a quarter of a mile from the town centre and within easy reach of Twickenham Green and Twickenham mainline station where you can get a fast link to London Waterloo. The area is also within Waldegrave Girls secondary catchment and other great primary schools.

### Features

- Four Bedrooms
- Two Bath/Shower Rooms
- Downstairs W.C
- Kitchen/Family Room With Bi-fold Doors
- Excellent Condition
- Rear Access

# Crane Road, Twickenham, TW2



Total area (approx.): 141.8 sq. m (1,526.3 Sq. ft)  
(Excluding Eaves)