



Clive Road, TW1

£1,770,000

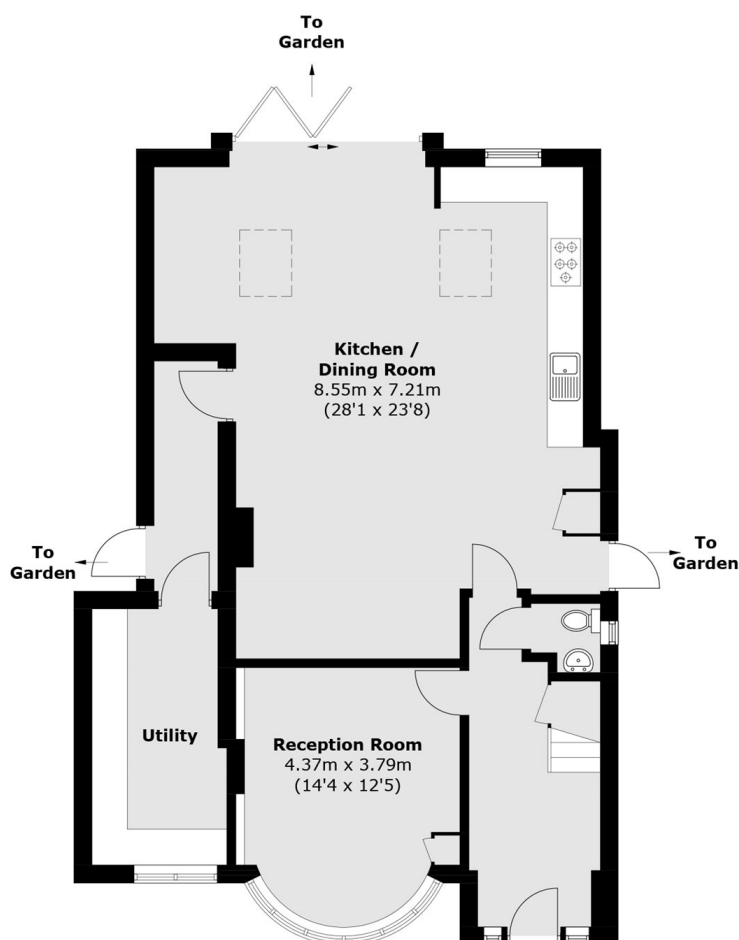
This fantastic five bedroom detached 1930's family home is in excellent condition throughout and it benefits from having two bath/shower rooms, a stylish open plan kitchen/family room, downstairs W.C and off street parking to the front.

Clive Road is a highly sought after cul de sac accessed off Strawberry Vale which connects Strawberry Hill and Teddington. Strawberry Hill offers a direct link to London Waterloo and the River Thames is just a few hundred yards away.

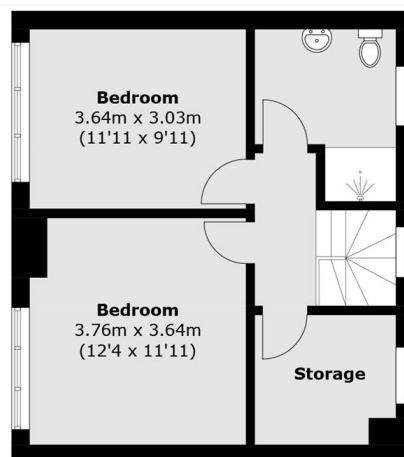
Features

- Five Bedrooms
- Detached
- Off Street Parking
- Excellent Condition
- Two Bath/Shower Rooms
- Downstairs W.C

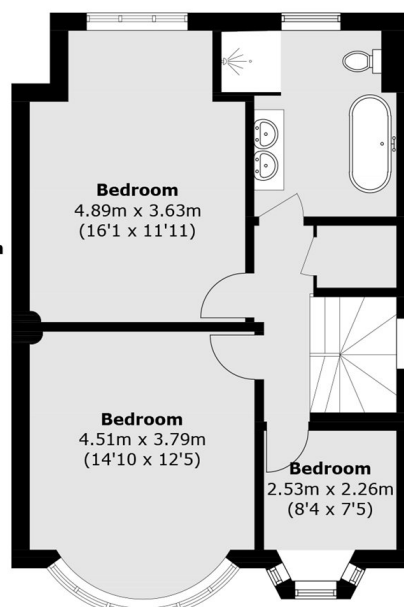
Clive Road, Strawberry Hill, TW1



Ground Floor



Second Floor



First Floor

Total area (approx.): 195.5 sq. m (2,104.3 sq. ft)