



## Chestnut Road, TW2

£3,500 Per calendar month

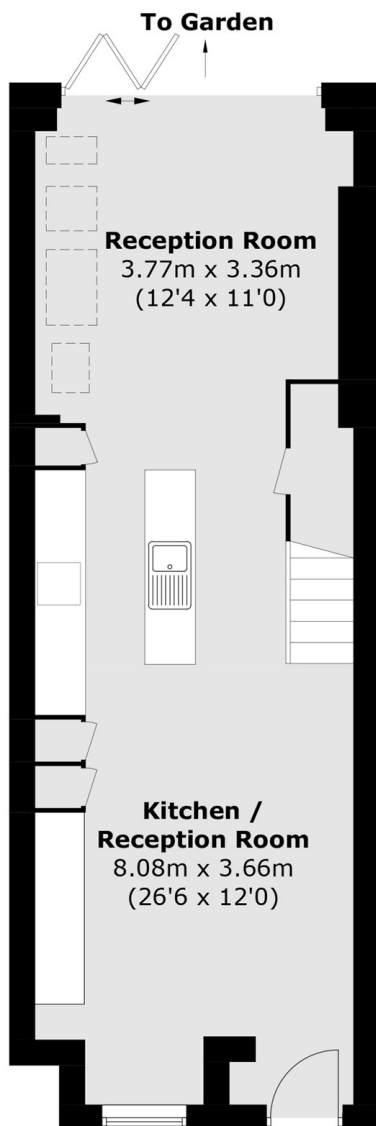
A beautifully presented three-bedroom mid-terrace Victorian home featuring an open-plan ground floor. The property boasts a modern, fully fitted kitchen with integrated appliances and bi-folding doors opening onto a well maintained garden.

Chestnut Road is a highly desirable residential cul-de-sac close to Twickenham Green and a number of excellent schools including Waldegrave Girls. Twickenham high street with its vast array of shops, pubs and restaurants is also nearby.

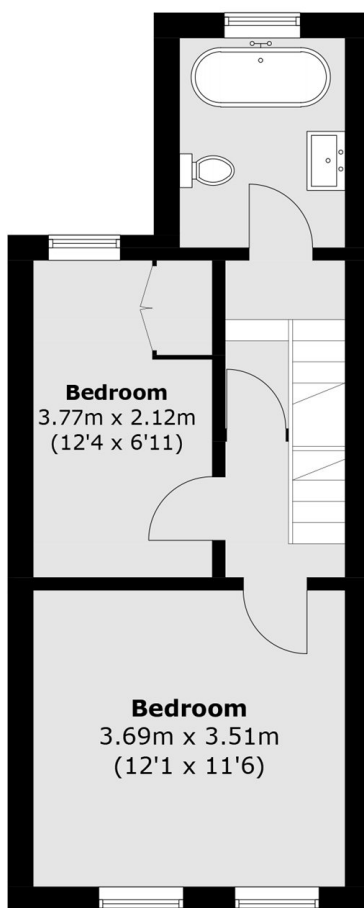
### Features

- Three Bedrooms
- Modern
- Open Plan Living
- Excellent Condition
- Landscaped Garden
- Moments From The Green

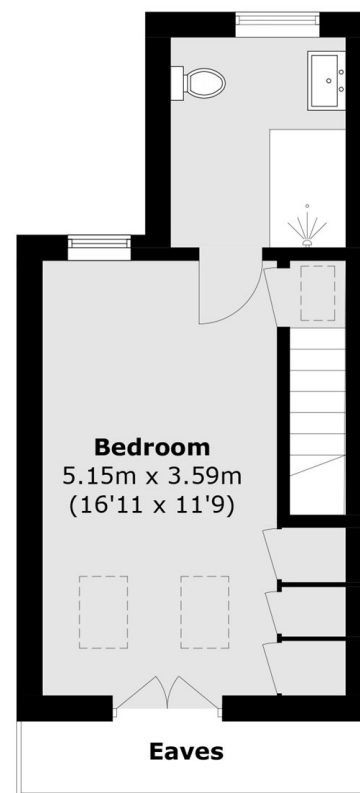
# Chestnut Road, Twickenham, TW2



**Ground Floor**



**First Floor**



**Second Floor**

Total area (approx.): 101.2 sq. m (1,089.3 sq. ft)  
(Excluding Eaves)