

Norcutt Road, TW2

£1,100,000

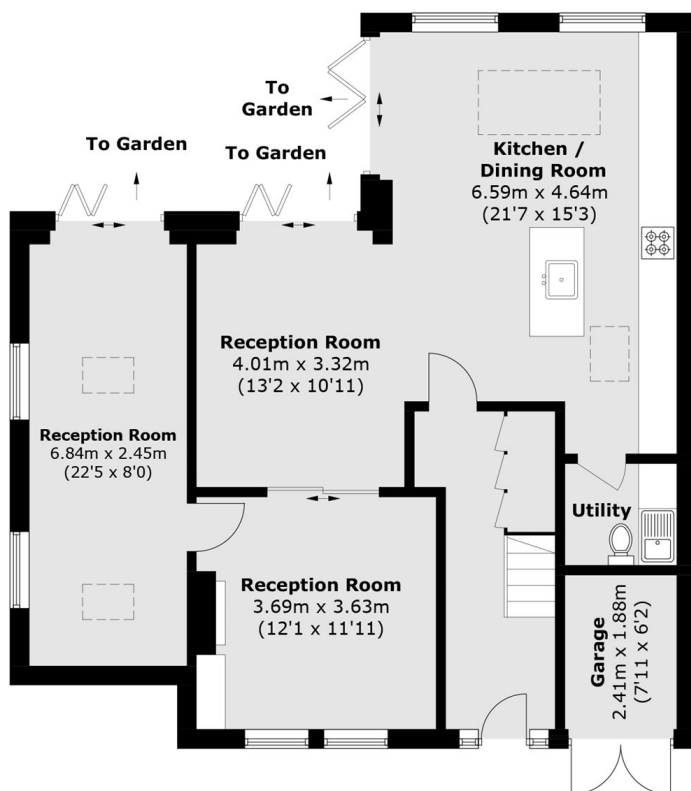
Offers Over £1,100,000. This unique, generously-sized detached period property makes a fantastic family home. As well as featuring four bedrooms and two bathrooms, the stunning living space features three reception rooms and a large open kitchen/dining area looking out onto the secluded garden, plus a downstairs WC and utility room.

Norcutt Road is a desirable residential cul-de-sac in a popular area of Twickenham, close to both the Green and the High Street. Local stations are within easy access offering fast links into central London. There are well-renowned schools locally such as Twickenham Primary Academy and Waldegrave School.

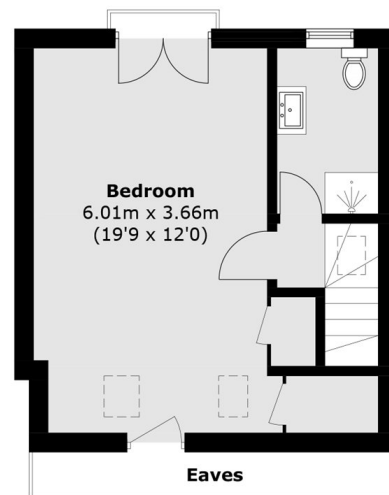
Features

- Detached Period Home
- Four Bedrooms
- Three Reception rooms
- Two Bathrooms
- Desirable Cul-De-Sac
- Excellent Schools Nearby

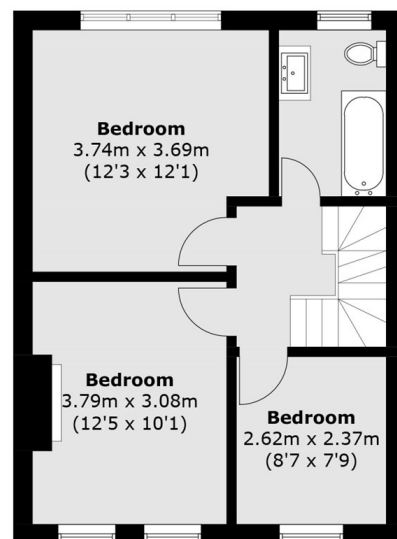
Norcutt Road, Twickenham, TW2



Ground Floor



Second Floor



First Floor

Approx Internal Area: 161.2 sq. m (1,735.0 sq. ft)
(Excluding Eaves)
Garage: 4.5 sq. m (48.4 sq. ft)