



## Sion Road, TW1

£2,250 Per calendar month

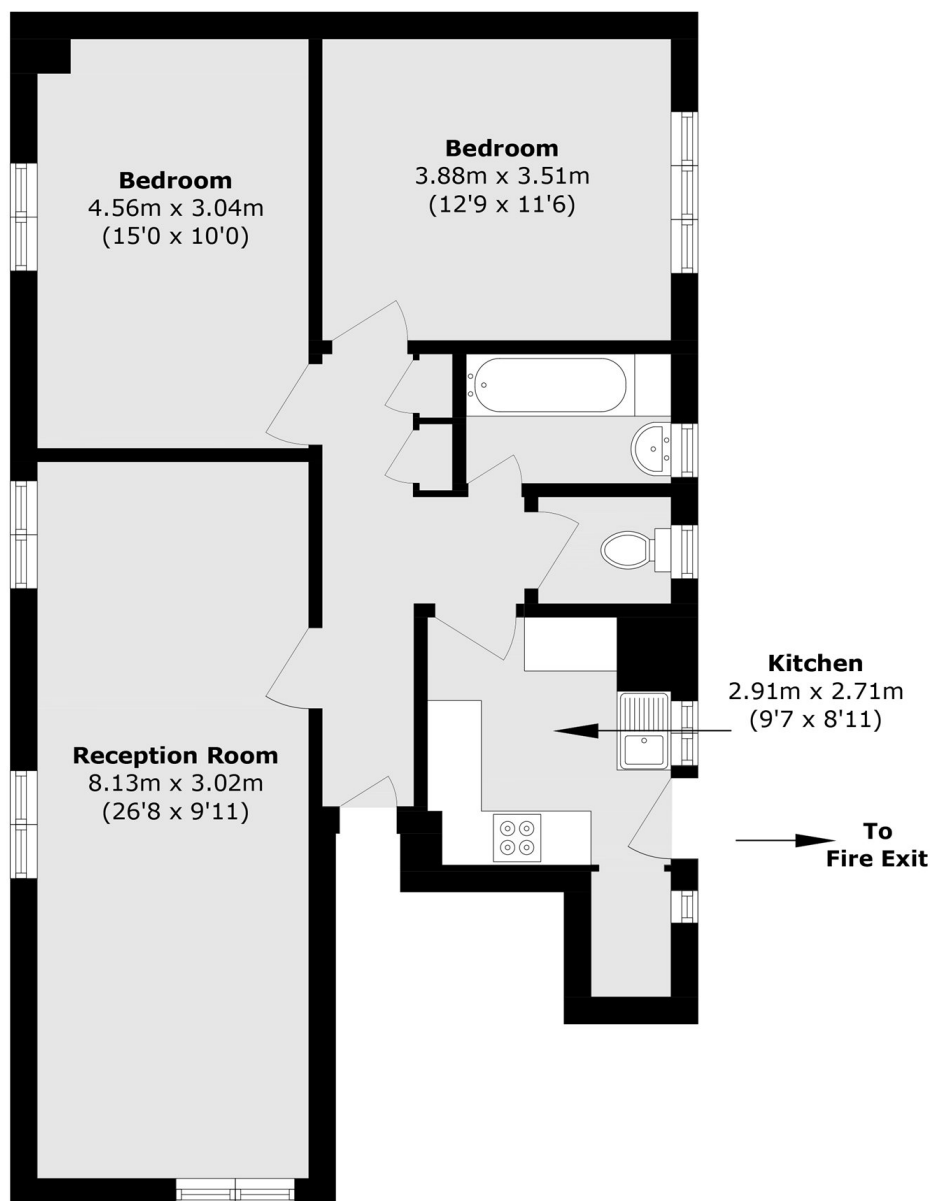
A well-presented two-bedroom property located in a quiet residential development in Twickenham. The accommodation offers a bright living area, a fitted kitchen, two well-proportioned bedrooms, and a well maintained bathroom.

Ideally situated within easy reach of Twickenham town centre, local shops, cafés, and excellent transport links, including Twickenham Station. The River Thames and nearby green spaces are also close by, making this an ideal home for professionals or a small family.

### Features

- Second Floor Apartment
- Two Double Bedrooms
- Seperate Kitchen
- Town Centre Location
- Close To The Station
- Unfurnished

# Sion Road, Twickenham, TW1



Total area (approx.): 75.8 sq. m (815.9 sq. ft)