



Holmes Road, TW1

£4,000 Per calendar month

A three bedroom Edwardian home perfect for the growing family. With more than one entertaining area and the well proportioned bedrooms; you certainly won't be stuck for space.

Holmes Road is situated in one of Strawberry Hill's most desirable roads, just off Cross Deep and just a few hundred yards from the River Thames.

Features

- Three Bedrooms
- Two Reception Rooms
- Popular Location
- Feature Fireplace
- Close To Key Schools
- Pretty Garden



Holmes Road, TW1

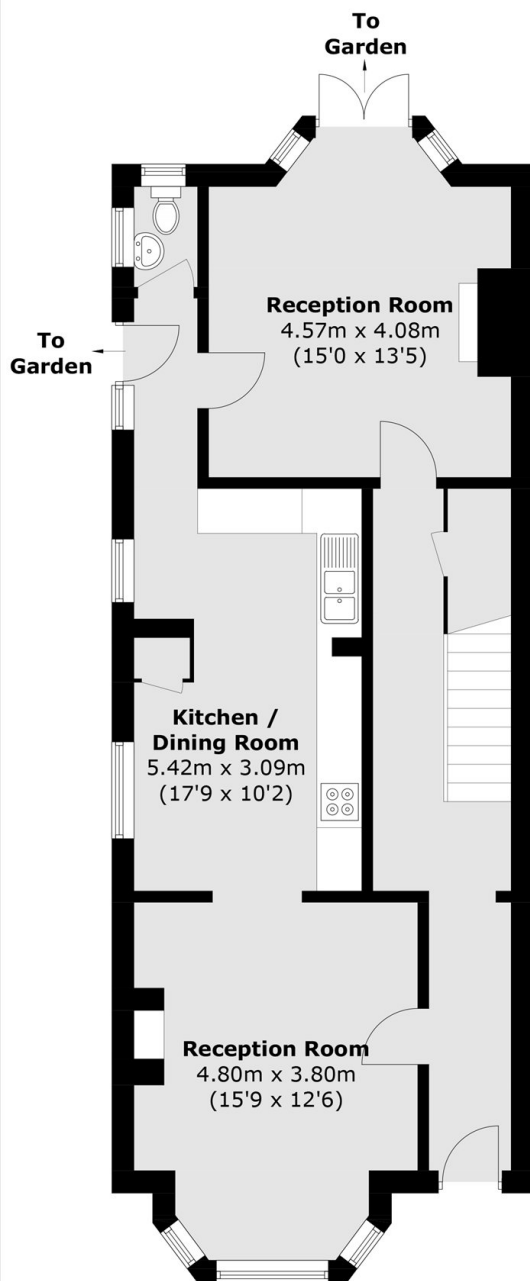
The reception room has been perfectly designed for tranquility with an intricate feature fireplace and high ceilings whilst the smell of baking from the country style kitchen fills the room.

The dining room at the back of the house is the ideal space for those Sunday roasts or for those more quieter weekends, you can relax and enjoy views of the mature garden whilst getting lost in a book.

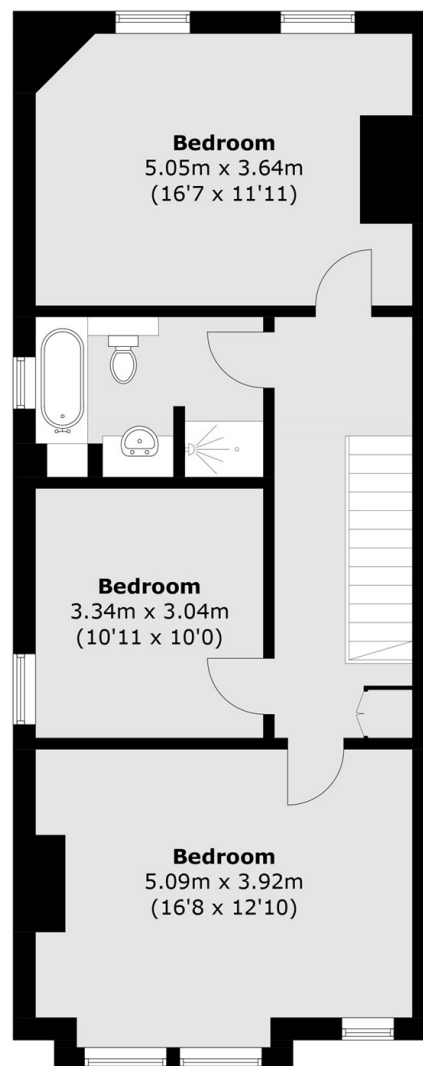
For any large or growing family, the three double bedrooms give plenty of options for the adults or the children to pick their favourite.



Holmes Road, Twickenham, TW1



Ground Floor



First Floor

Total area (approx.): 138.9 sq. m (1,495.1 sq. ft)