



Heath Road, TW1

£499,950

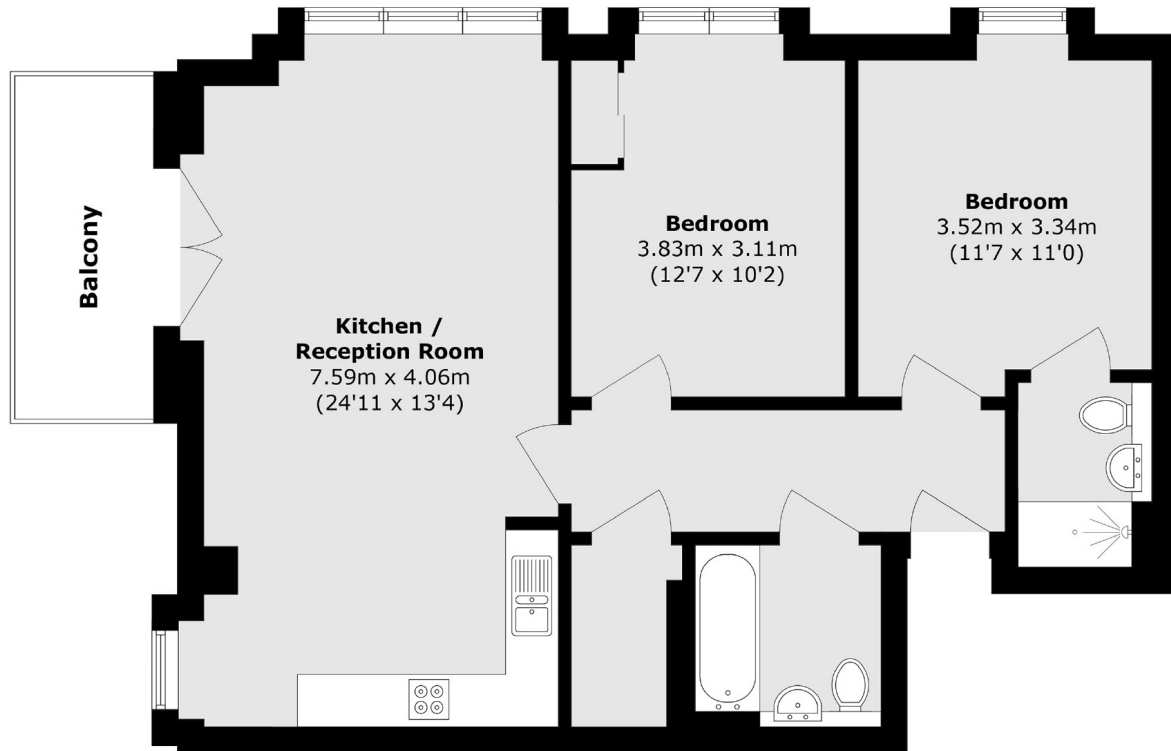
Offers over £499,950. Offered with no onward chain is this spacious two double bedroom modern apartment that benefits from having two bath / shower rooms, a private balcony, lift access, a share of freehold and an allocated parking space.

Twickenham House is situated on Twickenham high street and is easily accessible to Twickenham station with it's fast trains in and out of London. The high street has a vast array of shops, pubs and restaurants as well as having easy access to Twickenham Green.

Features

- Two Double Bedrooms
- Two Bath / Shower Rooms
- No Onward Chain
- Private Balcony
- Share Of Freehold
- Allocated Parking

Heath Road, Twickenham, TW1



Total area (approx.): 77.0 sq. m (828.8 sq. ft)

Balcony area (approx.): 6.5 sq. m (70.0 sq. ft)

Dexters

Twickenham
84 Heath Road
Twickenham
TW1 4BW
Sales
020 8744 0074

Energy Rating: B. We aim to make our particulars both accurate and reliable. However they are not guaranteed; nor do they form part of an offer or contract. If you require clarification on any points then please contact us, especially if you're traveling some distance to view. Please note that appliances and heating systems have not been tested and therefore no warranties can be given as to their good working order.

 **RICS** Regulated
Estate Agent
and Letting Agent

dexters.co.uk