



## Chestnut Road, TW2

### £725,000

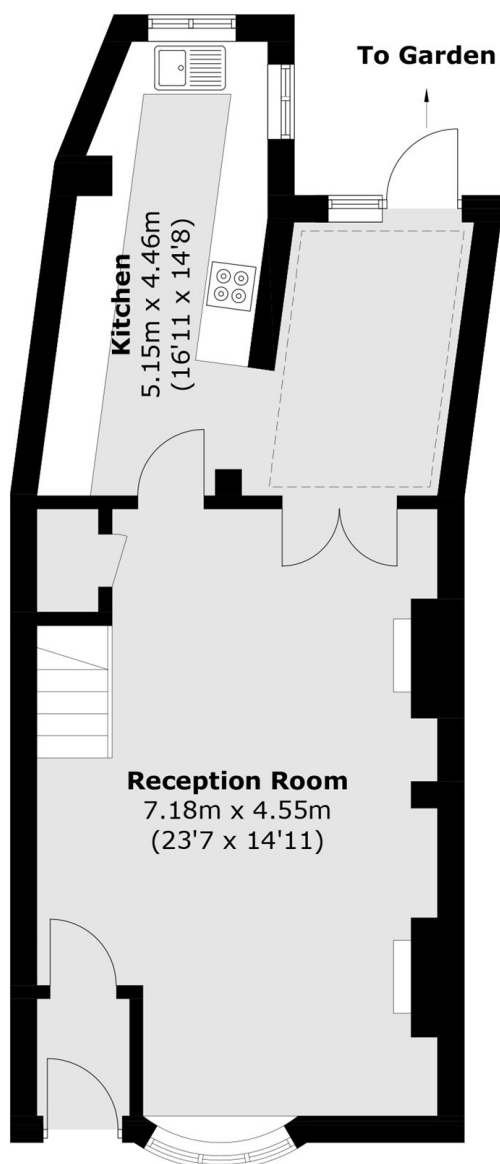
Nestled on the sought after Chestnut Road, this beautiful two bedroom end of terrace Victorian house is perfect for the growing family. The property benefits from having a modern kitchen, two large double bedrooms, four piece family bathroom and a large rear garden.

Chestnut Road is a popular location just behind Twickenham Green and is convenient for a number of excellent schools including Waldegrave Girls, Archdeacon and Trafalgar. There is easy access into Twickenham high street which offers a vast array of shops, cafés and restaurants.

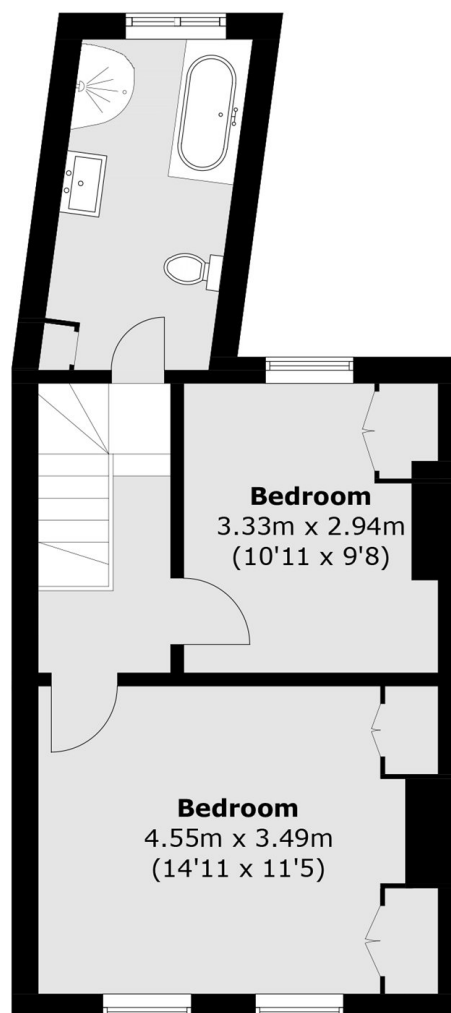
### Features

- Two Large Double Bedrooms
- Excellent Condition
- End Of Terrace
- Large Rear Garden
- Popular Road
- Great School Catchments

# Chestnut Road, Twickenham, TW2



**Ground Floor**



**First Floor**

Total area (approx.): 89.1 sq. m ( 959.0 sq. ft)