



Gloucester Road, TW2

£810,000

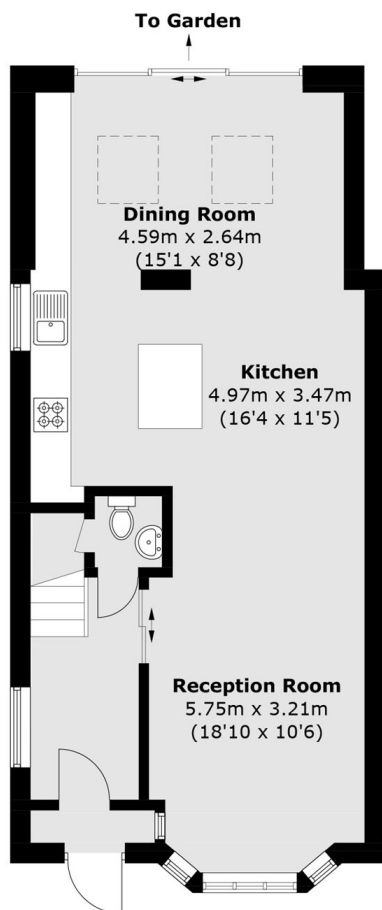
Offers Over £810,000. Arguably one of the finest houses on the street is this impressive four bedroom end of terrace 1930's family home that benefits from having two shower rooms, a downstairs W.C, off street parking and side access leading to a stylishly landscaped rear garden.

Gloucester Road is a fantastic residential street in a popular area of Twickenham. The property is close to Kneller Gardens Park, the River Thames and Whitton mainline station with its fast trains into London Waterloo. There are excellent state and private schools nearby (eg. Waldegrave Girls, Archdeacon, St. James and The Mall), two royal parks and many pleasant, green open spaces.

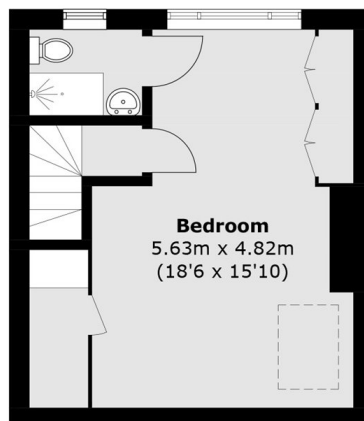
Features

- Four Bedrooms
- Off Street Parking
- Side Access
- Fully Renovated & Extended
- Two Shower Rooms
- Downstairs W.C

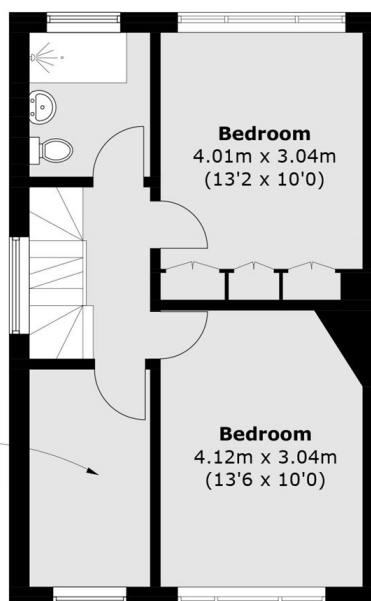
Gloucester Road, Twickenham, TW2



Ground Floor



Second Floor



First Floor

Total area (approx.): 124.5 sq. m (1,340.1 sq. ft)