



## Poulett Gardens, TW1

### £2,500,000

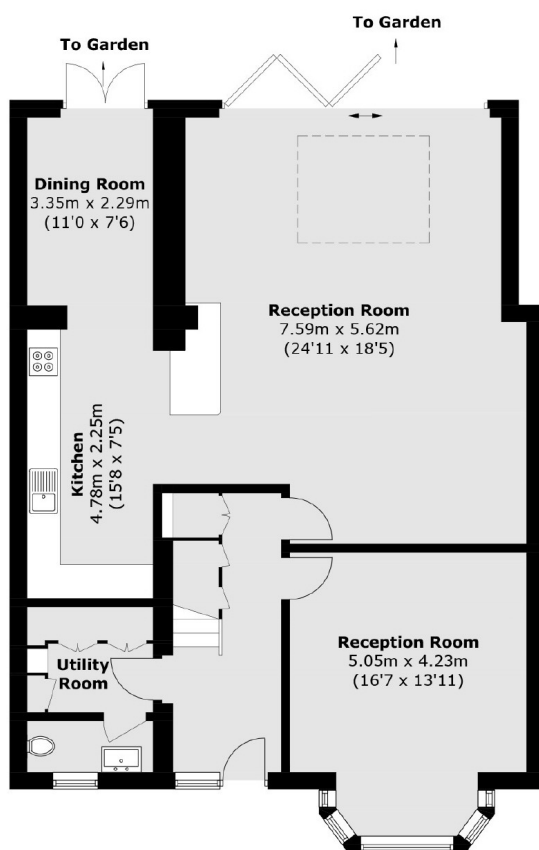
Offered with no onward chain and renovated to an exceptional standard throughout by the current owner, this stunning home boasts five bedrooms, three bath/shower rooms, a downstairs W.C, a utility room and off street parking to the front.

Poulett Gardens is conveniently located just off the high street in Twickenham, providing easy access to the mainline train station and local shops, bars and restaurants. There are also a number of excellent state and private schools close by such as Orleans Park.

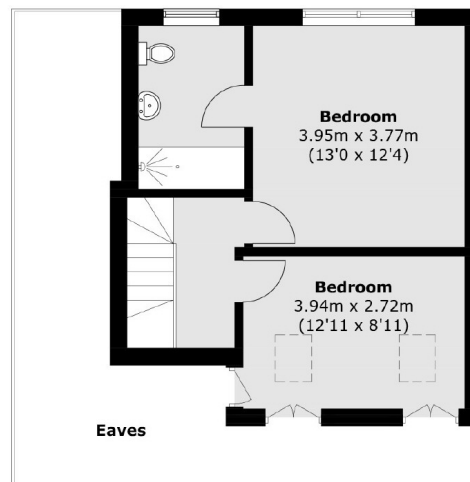
### Features

- Five Bedrooms
- Three Bath/Shower Rooms
- Off Street Parking
- Utility Room
- Downstairs W.C
- Fully Renovated & Extended

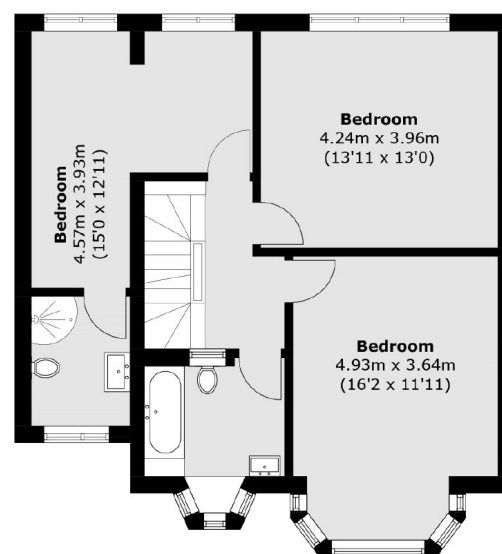
# Poulett Gardens, Twickenham, TW1



**Ground Floor**



**Second Floor**



**First Floor**

Total area (approx.): 212.5 sq. m (2,287.3 sq. ft)  
(Excluding Eaves)