



Marlow Crescent, TW1

£2,300 Per calendar month

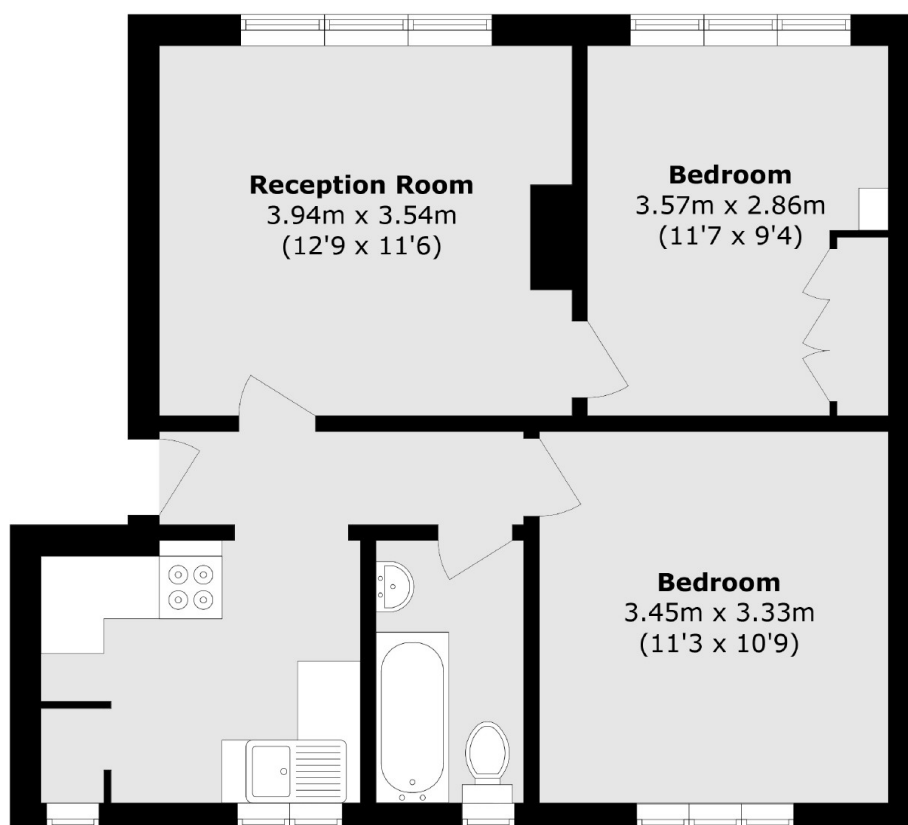
A wonderfully presented ground floor two bedroom flat located 0.7 miles from Twickenham mainline station. The property has a spacious reception room, separate kitchen, two double bedrooms, large private garden and benefits from two off street parking spaces.

Marlow Crescent is conveniently located for access into Twickenham where you will find fast trains to London Waterloo. The Property is also just around the corner from the A316 which leads to central London and also out to the M3.

Features

- Ground Floor
- Private Garden
- Excellent Location
- Two Double Bedrooms
- Close To Twickenham Station
- Off Street Parking

Marlow Crescent, Twickenham, TW1



Total area (approx.) 53.1 sq.m (571.6 sq.ft)