



## Kendrey Gardens, TW2

£825,000

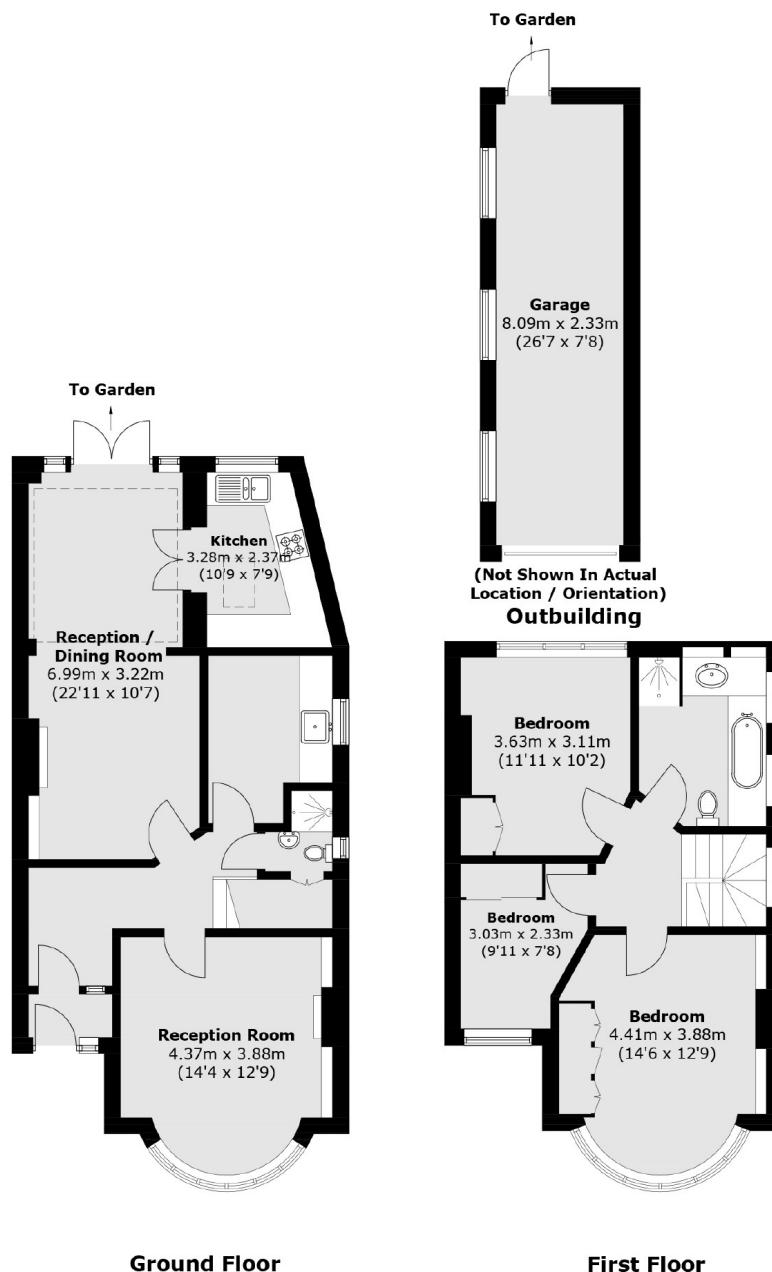
This lovely 1930s semi-detached house has three/four bedrooms and the potential to extend (STPP). It features large, connecting reception rooms, giving it a great flow and plenty of room for family life or entertaining. The property also comes with a generous rear garden, off-street parking, and a garage. Perfect for anyone looking for extra space and flexibility in a great location

Kendrey Gardens is a beautiful residential cul-de-sac located just off Whitton Road. Twickenham town centre is close by offering a vast array of local shops, bars and restaurants, as is Twickenham mainline station which provides fast and frequent city links.

### Features

- Large 1930's Family Home
- Three/Four Bedrooms
- Large Garden
- Garage
- Scope To Extend
- Popular Road

# Kendrey Gardens, Twickenham, TW2



Total area (approx.): 111.0 sq. m (1,194.7 sq. ft)  
Garage : 19.0 sq. m (204.5 sq. ft)

## Dexters

Twickenham  
84 Heath Road  
Twickenham  
TW14BW

Sales  
020 8744 0074

Energy Rating: D. We aim to make our particulars both accurate and reliable. However they are not guaranteed; nor do they form part of an offer or contract. If you require clarification on any points then please contact us, especially if you're traveling some distance to view. Please note that appliances and heating systems have not been tested and therefore no warranties can be given as to their good working order.

**RICS** | Regulated  
Estate Agent  
and Letting Agent

dexters.co.uk