



## Villiers Avenue, TW2

**£2,995** Per calendar month

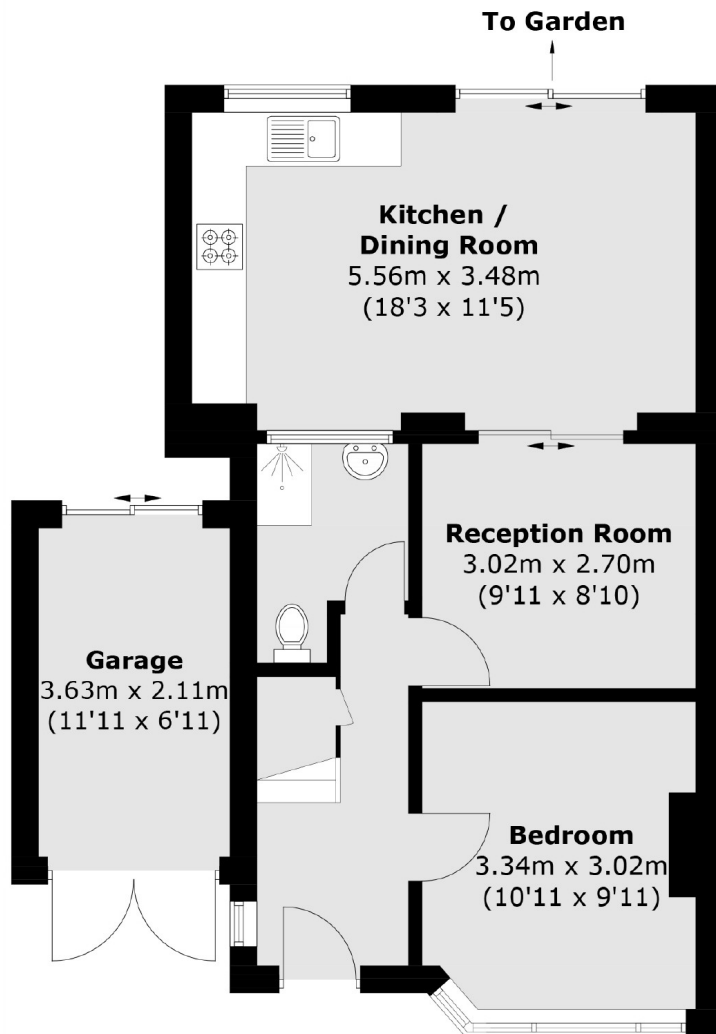
A modern semi-detached four bedroom family home, located in a popular residential area. The property includes off-street parking, a large private garden and the benefit of two reception rooms and garage.

Villiers Avenue is situated close to many good transport links which will take you to Twickenham, Richmond and Kingston town centres and Whitton mainline station with its fast link to London Waterloo is just 1.2 miles away.

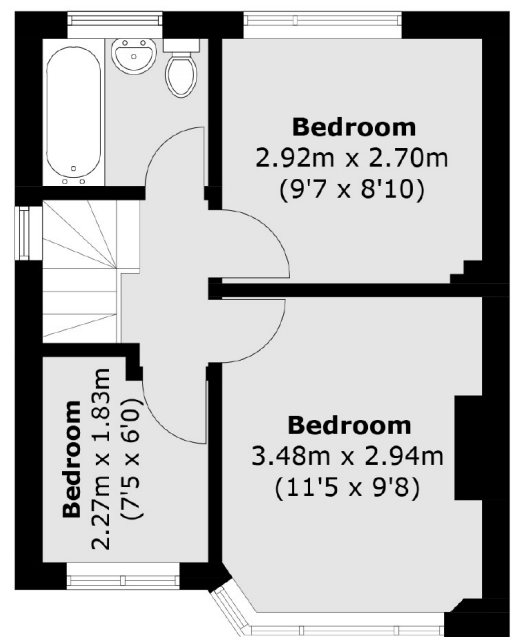
### Features

- Refurbished Throughout
- Four Bedrooms
- Off Street Parking
- Two Bathrooms
- Private Garden
- Garage

# Villiers Avenue, Whitton, TW2



**Ground Floor**



**First Floor**

Approx Internal Area: 79.3 sq. m (853.5 sq. ft)  
Garage: 8.2 sq. m (88.2 sq. ft)

## Dexters

Twickenham  
84 Heath Road  
Twickenham  
TW1 4BW

Lettings  
020 8744 2233

Energy Rating: D. We aim to make our particulars both accurate and reliable. However they are not guaranteed; nor do they form part of an offer or contract. If you require clarification on any points then please contact us, especially if you're traveling some distance to view. Please note that appliances and heating systems have not been tested and therefore no warranties can be given as to their good working order.

 **RICS** | Regulated  
Estate Agent  
and Letting Agent

dexters.co.uk