



Amyand Park Road, TW1

£2,100 Per calendar month

A well presented two double bedroom Victorian conversion apartment, which offers a modern kitchen, a reception room with wooden flooring and beautiful communal gardens.

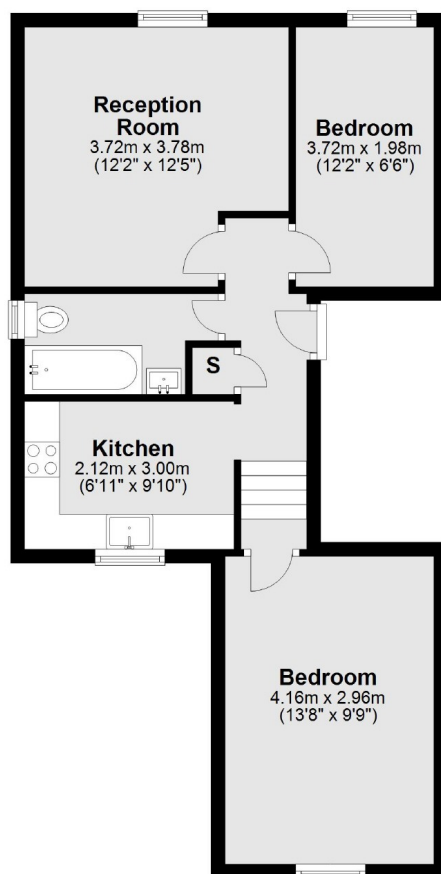
Amyand Park Road is a highly sought after tree-lined road close to both Twickenham high street and St Margaret's Village. Twickenham station with its fast links to London Waterloo is just around the corner.

Features

- Victorian Conversion
- Two Double Bedrooms
- Modern Kitchen
- White Bathroom Suite
- Communal Gardens
- Character Features

Amyand Park Road, Twickenham, TW1

First Floor



Total area: approx. 50.2 sq. metres (539.9 sq. feet)