



Brewery Lane, TW1

£4,750 Per calendar month

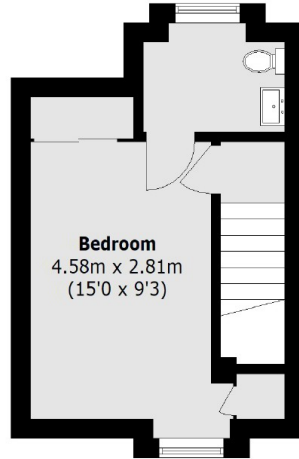
This superb four-bedroom house is split over four floors, combining the classic elegance of a traditional London mews with the ultimate in modern living. The property is situated in a private gated development, featuring an open plan dining area, private garden and two allocated parking spaces.

This private development was built by the award-winning developers, St. James. Brewery Lane is ideally located moments from Twickenham Station as well as offering a vast selection of shops, cafes and restaurants. The iconic Twickenham Rugby Stadium is moments away which features a Virgin Active Health Club.

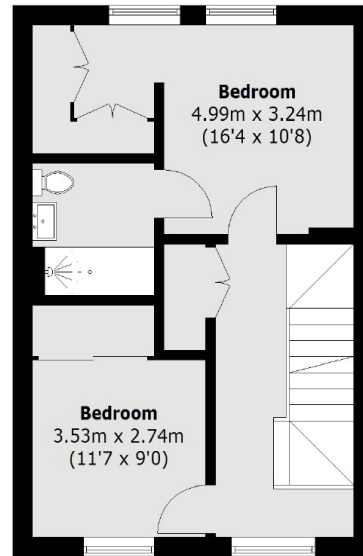
Features

- Four Bedroom Town House
- Gated Development
- Split Over Four Levels
- Four Bathrooms
- Private Allocated Parking
- Close To Station

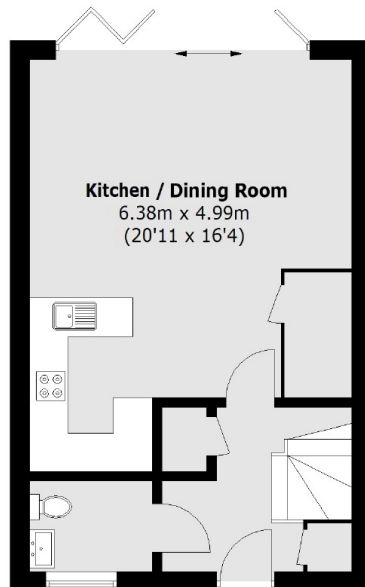
Brewery Lane, Twickenham, TW1



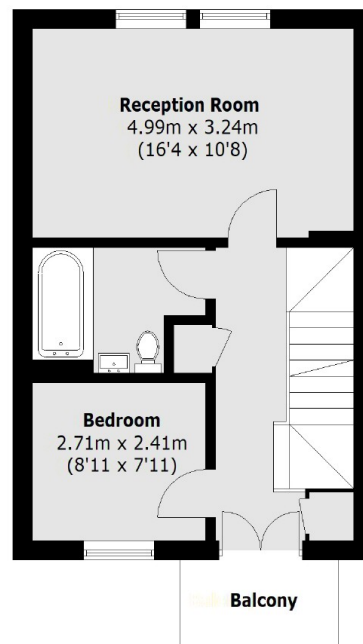
Third Floor



Second Floor



Ground Floor



First Floor

Total area (approx.): 142.4 sq. m (1,532.7 sq. ft)

Balcony area: 3.4 sq. m (36.6 sq. ft)

Dexters

Twickenham
84 Heath Road
Twickenham
TW1 4BW
Lettings
020 8744 2233

Energy Rating: B. We aim to make our particulars both accurate and reliable. However they are not guaranteed; nor do they form part of an offer or contract. If you require clarification on any points then please contact us, especially if you're traveling some distance to view. Please note that appliances and heating systems have not been tested and therefore no warranties can be given as to their good working order.

RICS Regulated
Estate Agent
and Letting Agent

dexters.co.uk