



Hounslow Road, TW2

£585,000

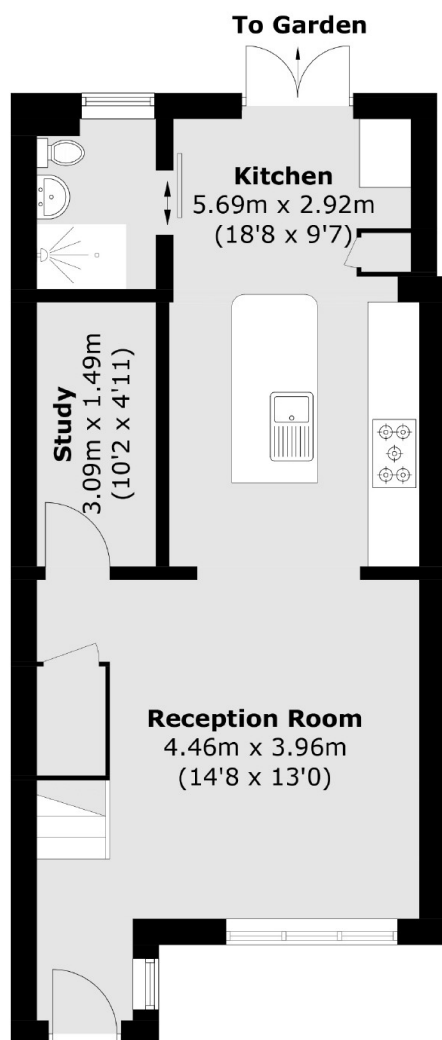
This two bedroom Victorian home has been completely modernised by the current owners with two bath/shower rooms, an occasion room/office, potential for off street parking STPP and a lovely courtyard garden.

Hounslow Road is situated next to Whitton high street where you will find a vast array of shops, restaurants and cafés. For those who need a fast link to Waterloo you can access via Whitton or Twickenham mainline stations and the Piccadilly line at Hounslow central is also close by.

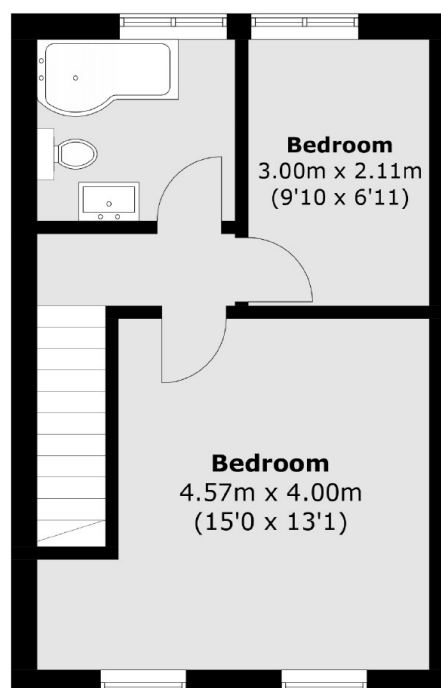
Features

- Two Bedroom Victorian Home
- Excellent Condition
- Office / Occasion Room
- Two Bath/ Shower Rooms
- Extended To The Rear
- Private Garden

Hounslow Road, Whitton, TW2



Ground Floor



First Floor

Total area (approx.): 76.7 sq. m (825.6 sq. ft)